



Proudly made in  
Canada  
to Canadian  
Standards

# THE SOUTHWOOD SERIES

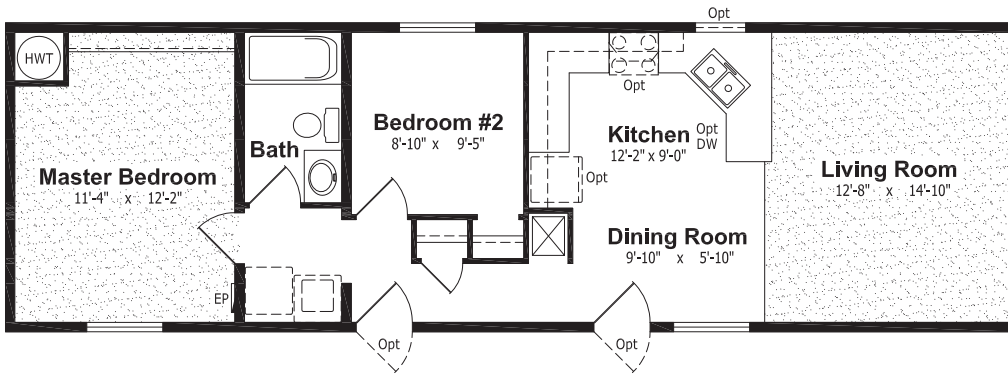


*16' and 20' Wide Homes*

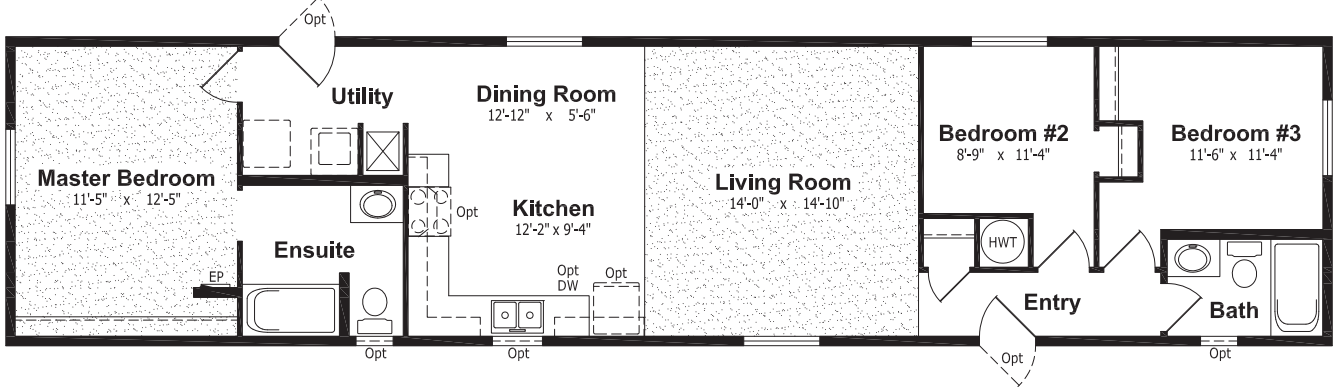


# THE SOUTHWOOD SERIES

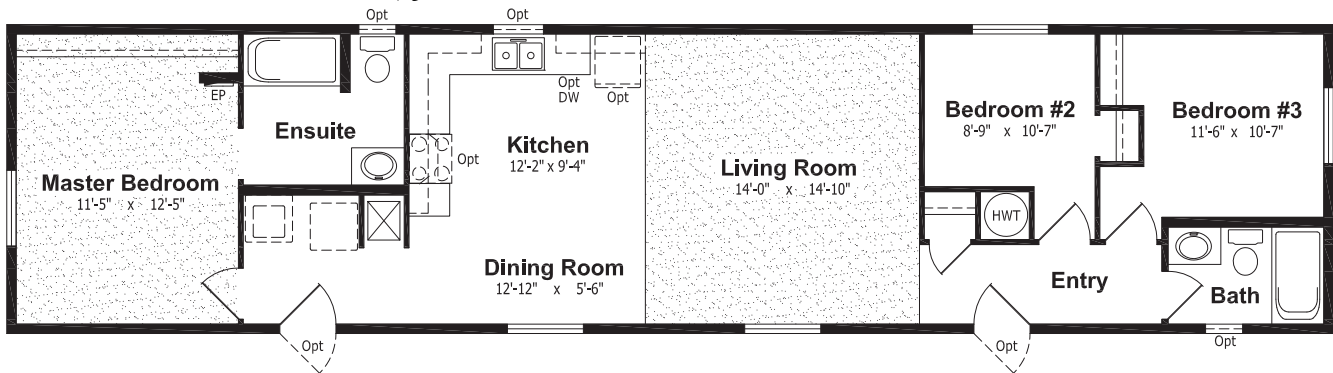
Model S-8, 16' x 52', 832 sq. ft.



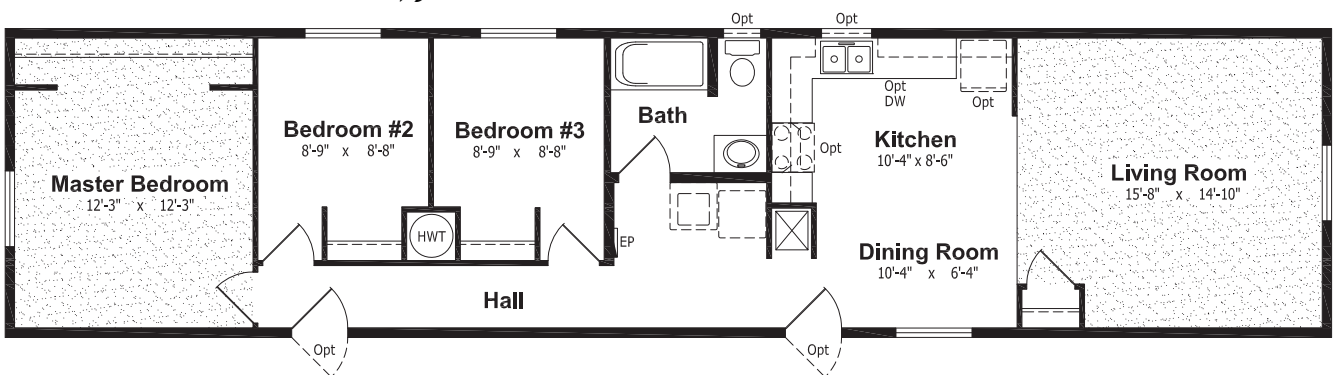
Model S-10, 16' x 68', 1,088 sq. ft.



Model S-12, 16' x 68', 1,088 sq. ft.

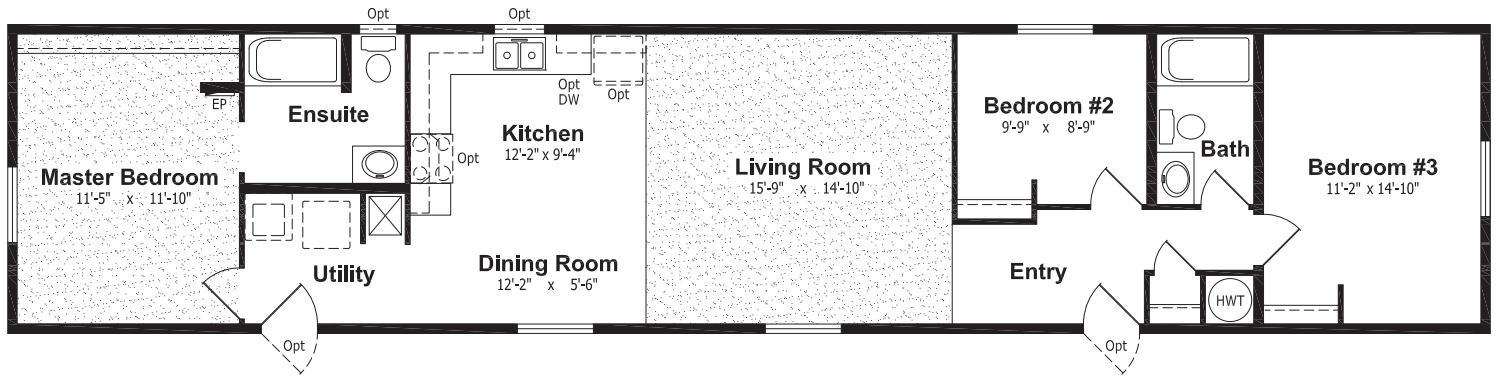


Model S-14, 16' x 68', 1,088 sq. ft.

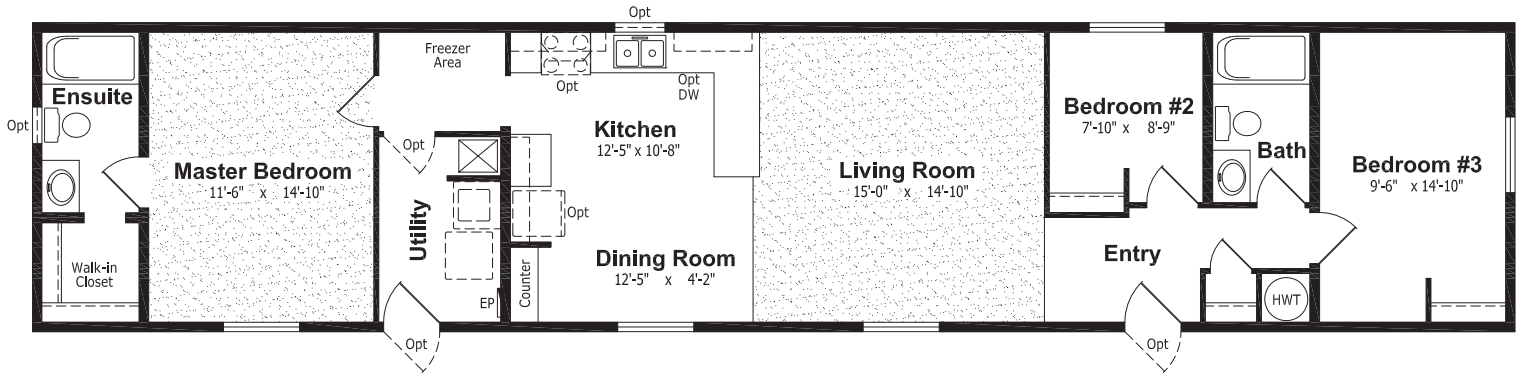


# THE SOUTHWOOD SERIES

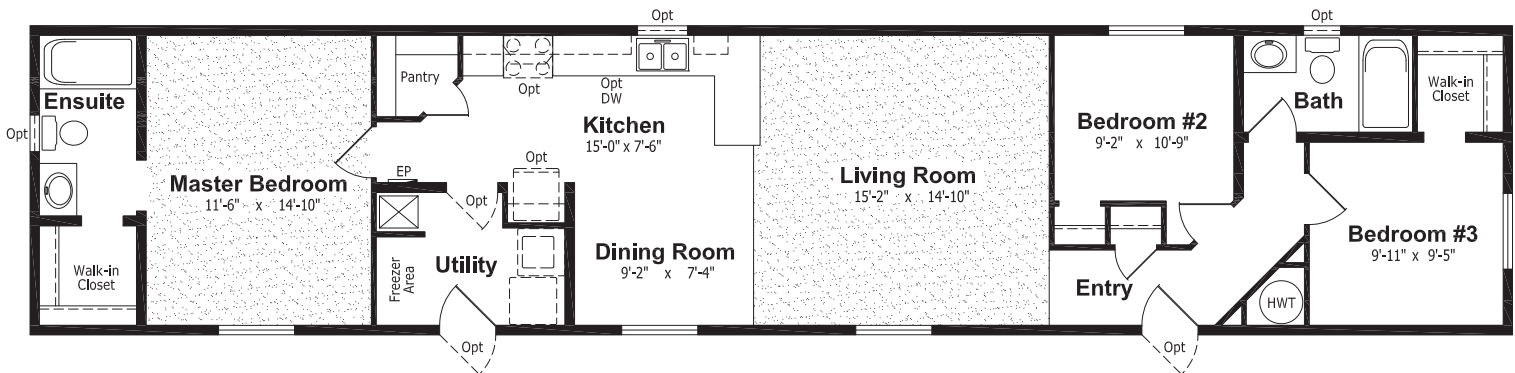
Model S-16, 16' x 76', 1,216 sq. ft.



Model S-18, 16' x 76', 1,216 sq. ft.

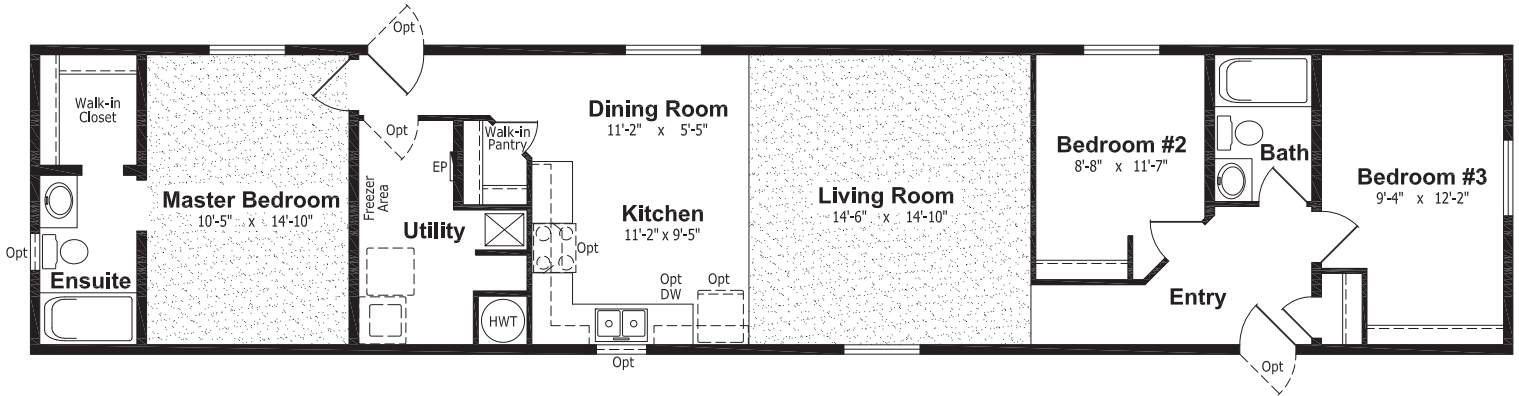


Model S-20, 16' x 76', 1,216 sq. ft.



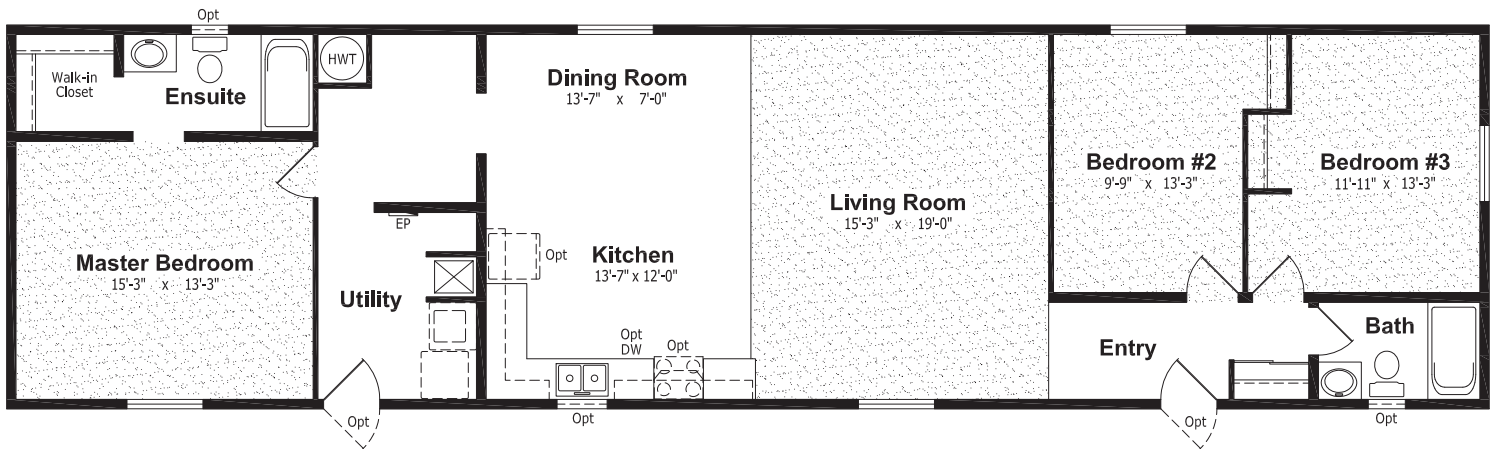
# THE SOUTHWOOD SERIES

Model S-22, 16' x 76', 1,216 sq. ft.



Artist Rendering of Model S-224 with optional 3rd Gable & Shutters

Model S-224, 20' x 76', 1,520 sq. ft.



## EXTERIOR

- Shutters (Two Styles)
- Three and Four Light Bay Windows
- Palladian Windows
- Octagon Windows
- Acrylic Block Windows
- White or Pewter Lattice in Windows
- Skylights
- Patio, Garden and Cottage Doors
- Storm Doors
- Exterior Door with Half Round, 9 Lite or Franklin Insert
- Turbine Vents
- Electric Door Chimes
- Exterior Recessed Pot Light(s)
- Extra Exterior GFI
- High Snow Load Roof
- 8' Sidewalls
- Frost Free Tap(s)

## INTERIOR

- Fully Finished Drywall
- Media Room Package
- Laminate Flooring
- Upgrade Vinyl Floor Coverings
- Berber Carpet
- French Doors
- Mirrored Closet Doors
- Freezer Cabinets
- Soak Sink with Cabinet
- Utility Room Door
- Ceiling Fan with Lights
- Chandeliers
- Recessed Fluorescent Lights
- Under Counter Lighting
- Bedroom Closet Doors
- 8' Sidewalls

## KITCHEN

- Oak, Maple, Cherry or Espresso Raised Panel, Shaker Style or PVC Cabinets (Some restrictions apply)
- Wand Style Deluxe Single Lever Kitchen Faucet

## KITCHEN (CONT'D)

- Corner Glass Cabinet Doors
- Island Work Centre
- Appliance Garage
- Planning Centre
- Lazy Susan
- Granite Composite Upgrade Sink
- Oak or Maple Counter Edging
- Corian Executive Counter Edging
- White, Black or Stainless Appliances
- Built-In Dishwasher
- Combination Microwave/Range Hood
- Eye Level Oven and Cook Top Range
- Self Cleaning Range
- Two Door Side by Side Refrigerator
- Free Standing Bottom Mount Refrigerator

## BATHROOM

- 72" Tub/Shower
- Corner Oval Jetted Tub
- 36", 48" or 60" Shower c/w Glass Doors
- Handicap Toilet
- Tri-Mirror Medicine Cabinet
- Grab Bars
- Deluxe Shower Curtain
- Banjo Countertop on Vanity

## UTILITIES

- Gas Fireplace c/w Air Circulating Fan
- 40 Gallon U.S. Gas Water Heater
- Forced Air Electric Furnace
- Air Conditioner-Ready Furnace
- Washer and Dryer
- Stacking Washer and Dryer
- Central Vacuum System
- Roughed in for Central Vacuum
- 200 Amp Service Panel
- Extra Telephone Jack(s)

Plus many more. Please check with your Retailer for Details

Not all home sites and home buyers have the same needs or wants, so SRI offers **decor options** that reflect not only the current home decorating trends, but also your own **personal** taste.





# STANDARDS AND SPECIFICATIONS

Are you looking for an affordable, yet spacious home? Look no further than the *Southwood Series* of homes, now featuring 20' wide homes as well as the ever popular 16' wide homes.

## EXTERIORS

- ★ Maintenance Free Vinyl Siding & Corners
- ★ Colour Coordinated Wood Fascia
- ★ 25 Year Shingle Roof
- ★ 4/12 Roof Pitch
- ★ PVC Combination Windows, complete with Screens
- ★ Weatherproof Outside Receptacle protected with GFI
- ★ Insulated Exterior Doors with Peepholes & Deadbolts
- ★ Coach Lights at all Exterior Doors
- ★ Separate Receptacle for Heat Tape
- ★ 2x6 Exterior Walls with "Rigid-Lam"
- ★ 2x10 Floor Joists, 16" o.c. - 16' Wide Homes
- ★ 12" I-Joists, 16" o.c. - 20' Wide Homes
- ★ 5/8" Sub Floor (Screwed, Nailed & Glued)
- ★ Perimeter Roof Venting System

## INTERIORS

- ★ Decorative Vinyl Covered Drywall
- ★ Insulation in Ceiling, Walls and Floors meets or exceeds all Applicable Codes
- ★ 6 mil. Vapour Barrier Including Switches and Receptacles
- ★ Attractive Residential Texture Gyproc Ceilings
- ★ Pewter Hardware, Lighting and Plumbing Fixtures
- ★ White Receptacles/Switches
- ★ Deluxe Lighting Package
- ★ Prefinished Interior Doors
- ★ Solid Shelving
- ★ Stainmaster Carpet in Living Room and Master Bedroom
- ★ Quality Vinyl Floor Coverings
- ★ Living Room wired for Light

## KITCHEN

- ★ Double Stainless Steel Kitchen Sink
- ★ Monterrey Modular Cabinets with Backs
- ★ Adjustable Shelves in All Cabinets - Upper and Lower
- ★ Laminated Countertops with 6" Laminate Backsplash and Bull Nose
- ★ Roller Slides on All Drawers
- ★ Single Lever Faucet with Vegetable Sprayer

## BATHROOM

- ★ GFI protected Receptacle
- ★ Exhaust Fan with Humidistat in Main Bath
- ★ Exhaust Fan in Ensuite on Separate Switch
- ★ One Piece Tub/Shower with Pressure Balanced Single Lever Faucet in All Bathrooms
- ★ White Bathroom Fixtures
- ★ Shower Head, Shower Rod and Shower Curtain Liner in all Baths
- ★ Cosmetic Box in Main Bath

## UTILITIES

- ★ H.E. Natural Gas Furnace with Electronic Ignition
- ★ 40 Gallon Electric Water Heater
- ★ Dryer Vent Discharge cut in Floor with Insert - shipped loose
- ★ Plumbed and Wired for Washer/Dryer
- ★ Electric Smoke Alarms
- ★ Switched Plug in Living Room
- ★ 100 amp Electric Service Panel
- ★ Electric Conduit through Floor
- ★ All Homes are Built to Meet or Exceed CSA A-277 Specifications



131 Stubb Ross Road, Lethbridge, Alberta T1K 7N3  
[www.regenthomes.ca](http://www.regenthomes.ca)

Authorized Retailer: