



saville SOMERSET

Single Section & Sectional Homes





The Factory

The Saville Somerset series of homes offers a full range of homes to the conscientious buyer. From an affordable single section home to a more substantial sectional home, the floorplans and options truly make this series special.

These homes are built in Lethbridge, Alberta, one of SRI's three facilities. This factory has been building homes since the 1960's but has clearly kept up with the current building trends. That will become apparent when you see the list of standard features for your new Northland Niagara series home.



Customize

Customizing your Saville Somerset home allows you to make your new home uniquely yours. Starting with the floorplan layout, moving on to cabinets, floor coverings, draperies and more, these personal choices make your home "just right" for you.



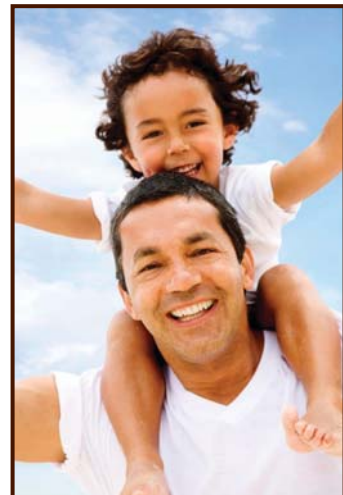
Quality

SRI/Regent - Lethbridge uses only high quality components from established suppliers. Their Intertek certified quality assurance CSA program ensures that each home is inspected at every stage of construction. While under construction, the building materials and most importantly, the house itself, are protected from the weather.



Timing

Why not take a look at all the features and options available and see if now is the right time for your new Saville Somerset home?





Standards & Specifications

EXTERIOR

- ✓ Maintenance Free Vinyl Siding and Corners
- ✓ Colour Coordinated Metal Fascia
- ✓ Smart Start Window Accents (2 Sides)
- ✓ 30 year Shingles
- ✓ 4/12 Pitch Roof
- ✓ Energy Efficient Low E Argon White PVC Thermopane Windows with Screens and Security Latches
- ✓ Insulated Steel Exterior Doors with Peephole & Deadbolt - 36" at Front and 36" at Rear where able
- ✓ 2x6 Exterior Walls with Belt Rails, 16" O.C.
- ✓ 2 x 10 Floor Joists - Single Section Homes and Foundation Models
- ✓ 2 x 8 Floor Joists - Sectional Homes
- ✓ Insulation Values=R-34 in Ceiling, R-20 in Side Walls and R-28 in Floors
- ✓ Engineered Roof Trusses
- ✓ Weatherproof GFI Protected Receptacle
- ✓ Exterior Frost Free Tap with Check Valve
- ✓ Coach Light at All Exterior Doors
- ✓ Lever Handle Doors
- ✓ Separate Receptacle for Heat Tape
- ✓ Residential Eaves (4 Sides)
- ✓ 7/16" Roof Sheathing

INTERIOR

- ✓ Cathedral Ceiling throughout in Sectional Homes and in Living Room, Dining Room and Kitchen in Single Section Homes
- ✓ Decorative Vinyl Covered Drywall
- ✓ Satin Platinum Hardware, Lighting and Plumbing Fixtures
- ✓ 2" Venetian Blinds on all Windows
- ✓ Valances on all Windows
- ✓ "Craftsman" Interior Doors
- ✓ 5/8" Subfloor-Glued, Nailed and Screwed
- ✓ Carpet in Living Room and Master Bedroom (And Hall in Sectional Homes)
- ✓ No wax Quality Vinyl Floor Covering
- ✓ Solid Shelving in all Closets
- ✓ White Receptacles and light Switches
- ✓ Ceiling Lights in all Bedrooms



KITCHEN

- ✓ 18 cu. ft. Frost Free Refrigerator
- ✓ 30" Electric Range with Clock and Timer
- ✓ 2-Speed White Rangehood Fan with Light-Vented to Exterior
- ✓ White Kitchen Appliances - Black and Stainless Optional
- ✓ Single Lever Kitchen Faucet with Sink Spray
- ✓ Modular Cabinets with Backs and Solid Oak Doors
- ✓ Laminated Countertops with 6" Laminate Backsplash with Bullnose (Kitchen and Baths)
- ✓ Crown Moulding
- ✓ Microwave Cabinet with Separate Circuit
- ✓ Double Stainless Steel Sink
- ✓ Roller Door slides on all Drawers

BATHROOM

- ✓ Tub/Shower Complete with Single Lever Pressure
- ✓ Balanced Faucet
- ✓ Single Lever Faucet at Vanity Sink
- ✓ Shower Head in All Bathrooms
- ✓ Shower Rods and Shower Curtain in All Bathrooms
- ✓ Exhaust Fan complete with Humidistat in Main Bath
- ✓ Exhaust Fan in Ensuite on Separate Switch
- ✓ Cosmetic box in Main Bath
- ✓ White Bathroom Fixtures
- ✓ GFI Protected Receptacle

UTILITIES

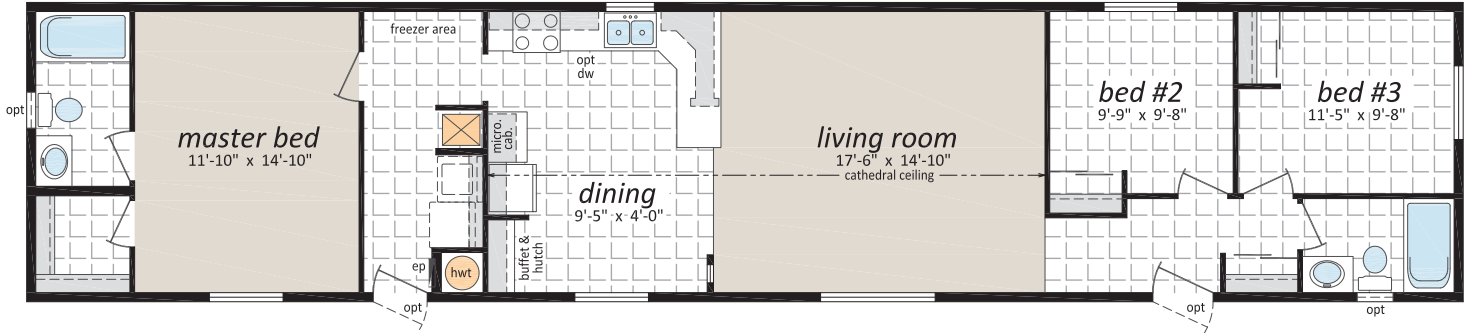
- ✓ 40 U.S. Gallon (33 Imperial Gallon) Electric Water Heater
- ✓ Natural Gas High Efficiency Furnace with Electronic Ignition
- ✓ Life Saving Smoke Detector(s)
- ✓ Dryer Vent Rough In
- ✓ Plumbed and Wired for Washer and Dryer
- ✓ Overhead Solid Shelf at Washer and Dryer Area
- ✓ 100 amp. Service Panel
- ✓ Electric Conduit through Floor
- ✓ Built to Meet or Exceed Applicable Provincial Codes

This is not a complete specification.
Please contact your Authorized Retailer
for more information

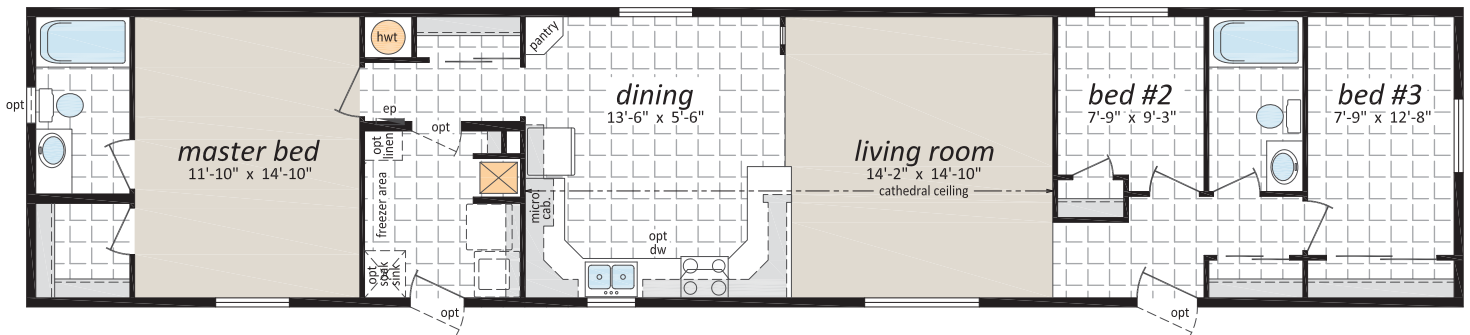




SP-1000A 16' x 76' 1,216 sq. ft.

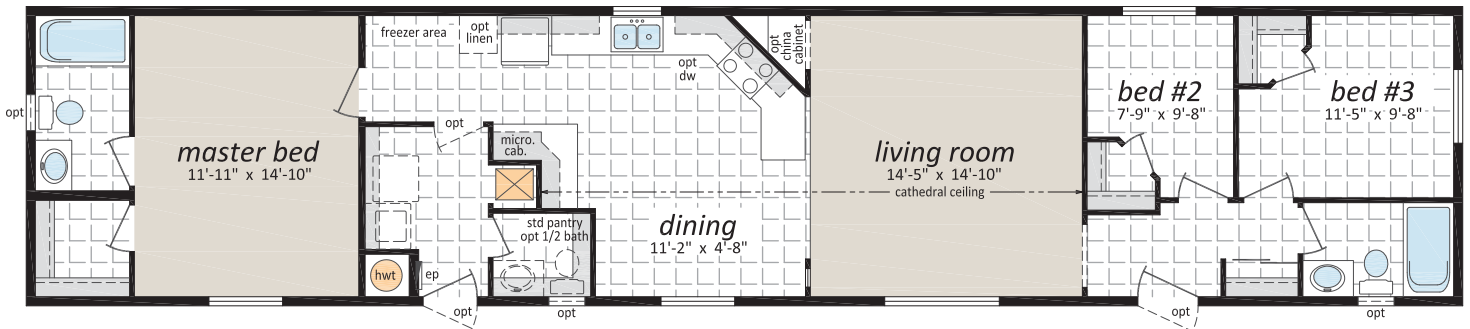


SP-1005A 16' x 76' 1,216 sq. ft.



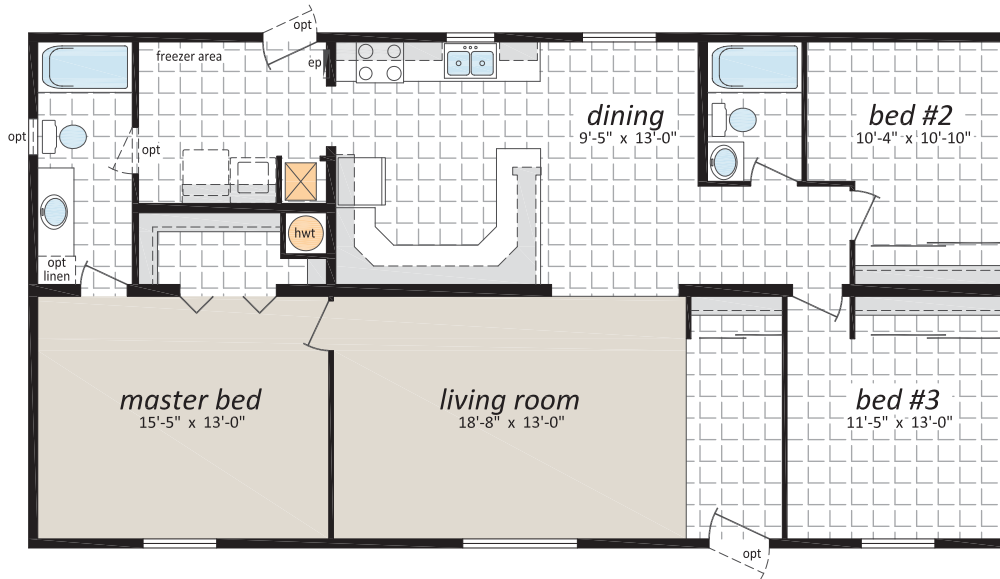
SP - 1006A
Shown with
Optional Exterior

SP-1006A 16' x 76' 1,216 sq. ft.

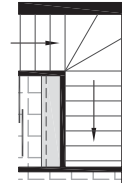




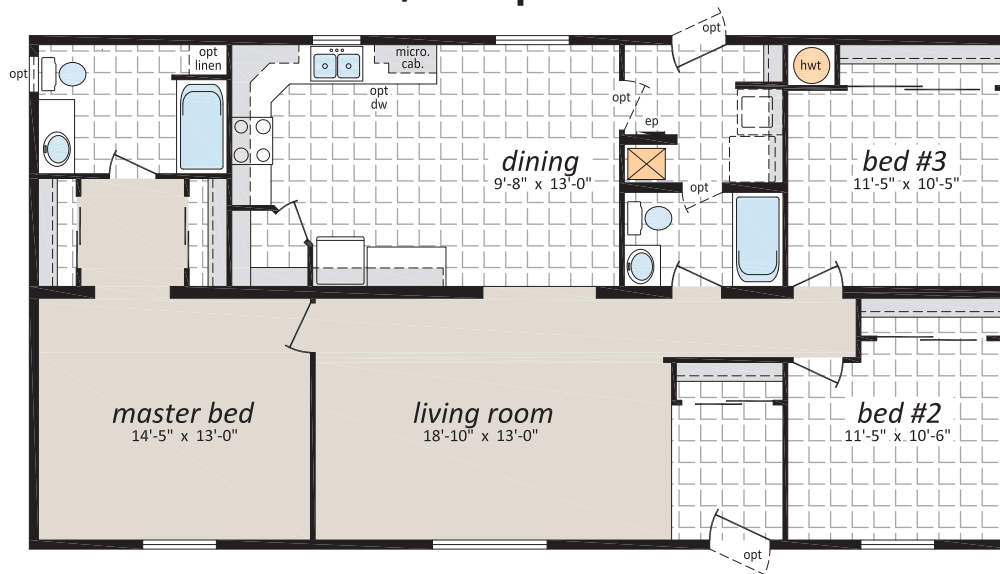
SP-1200A 27'6" x 52' 1,430 sq. ft.



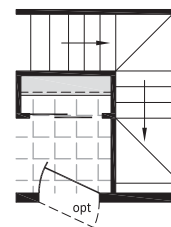
Proposed Stair
Location for Optional
Foundation Model



SP-1204 27'6" x 52' 1,430 sq. ft.



Proposed Stair
Location for Optional
Foundation Model





SP-1206A 27'6" x 60' 1,650 sq. ft.



SP - 2006A
Shown with Optional Exterior





Optional Features

EXTERIOR

- ☐ Shutters (Two Styles)
- ☐ Diamond Cut Ceilings
- ☐ Three and Four Light Bay Windows
- ☐ Octagon Windows
- ☐ Segmented Block Windows
- ☐ White or Pewter Lattice in Windows
- ☐ Skylights
- ☐ Patio, Garden Doors and Cottage Doors
- ☐ Storm Doors
- ☐ Exterior Door with Half Round, 9 Lite or Franklin Insert
- ☐ Turbine Vents
- ☐ Wireless Door Chimes
- ☐ Exterior Recessed Pot Light(s)
- ☐ Extra Exterior GFI
- ☐ High Snow Load Roof

INTERIOR

- ☐ Fully Finished Drywall
- ☐ Media Room Package
- ☐ Laminate Flooring
- ☐ Upgrade Vinyl Floor Coverings
- ☐ French Doors
- ☐ Mirrored Closet Doors
- ☐ Freezer Cabinets
- ☐ Soak Sink with Cabinet
- ☐ Utility Room Door
- ☐ Ceiling Fan with Lights
- ☐ Chandeliers
- ☐ Recessed Fluorescent Lights
- ☐ Under Counter Lighting

KITCHEN

- ☐ Various Cabinet Door Selections
- ☐ Corner Glass Cabinet Doors
- ☐ Island Work Centre
- ☐ Wand Style Deluxe Single Lever Kitchen Faucet
- ☐ Planning Centre
- ☐ Lazy Susan
- ☐ Granite Composite Upgrade Sink
- ☐ Oak, FE or White Corian Counter Edging
- ☐ Black or Stainless Steel Appliances
- ☐ Built-In Dishwasher

KITCHEN (Cont'd)

- ☐ Combination Microwave/Range Hood
- ☐ Eye Level Oven and Cook Top Range
- ☐ Self Cleaning Range
- ☐ Two Door Side by Side Refrigerator
- ☐ Free Standing Bottom Mount Refrigerator



BATHROOM

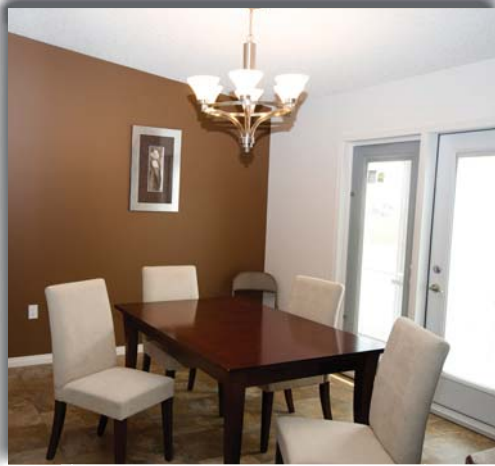
- ☐ 72" Tub/Shower
- ☐ Corner Oval Jetted Tub
- ☐ 2 Person Jetted Tub
- ☐ 36", 48" or 60" Shower c/w Glass Doors
- ☐ Handicap Toilet
- ☐ Tri-Mirror Medicine Cabinet
- ☐ Grab Bars
- ☐ Deluxe Shower Curtain
- ☐ Banjo Countertop on Vanity

UTILITIES

- ☐ Gas Fireplace c/w Air Circulating Fan
- ☐ 40 Gallon U.S. Gas Water Heater
- ☐ Forced Air Electric Furnace
- ☐ Air Conditioner-Ready Furnace
- ☐ Washer and Dryer
- ☐ Stacking Washer and Dryer
- ☐ Central Vacuum System
- ☐ Roughed in for Central Vacuum
- ☐ 200 Amp Service Panel
- ☐ Extra Telephone Jack(s)

Plus many more. Please check with your Retailer for details.





saville SOMERSET

Single Section & Sectional Homes

Intertek

MHI Canada



10 YEAR



Progressive
HOME WARRANTY

Authorized Retailer:

131 Stubb Ross Road . Lethbridge . Alberta T1K7N3

www.regenthomes.ca



This is not a fully detailed specification. SRI Homes reserves the right to change specifications, designs, materials and suppliers without notice and without incurring obligation. Information contained herein is from data available at the time of printing. Photos and renderings may show optional features. Printed in Canada. 2500/04/2015

