



# SAVILLE CJS 20'

*wide homes*

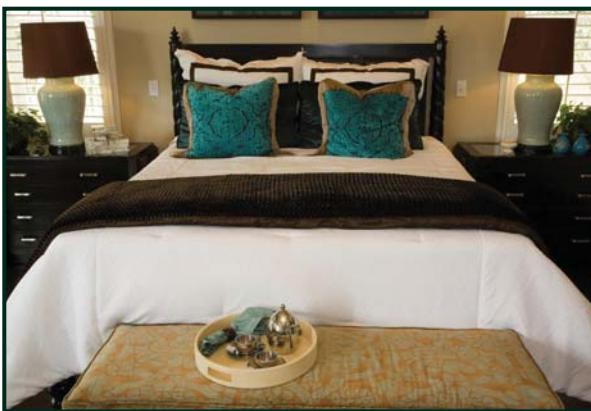
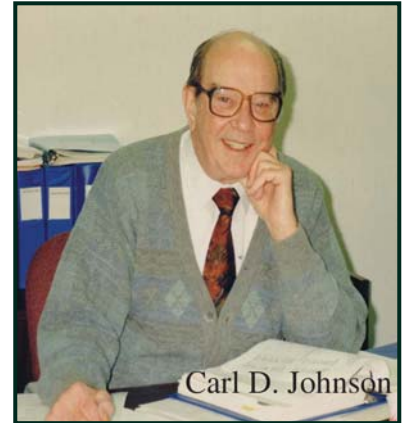


# SAVILLE CJS 20' wide homes



Buying an SRI home built in Lethbridge, Alberta is buying a home built in tradition. This home building facility is one of SRI's three facilities and has been building homes since the 1960's. This plant employs over 200 employees and covers 20 acres with 110,000 sq. ft. dedicated to housing production. This SRI plant is known for developing the 20' wide home as an affordable housing option.

The CJS Series was created as a tribute to Carl Johnson, the founder of SRI Homes. Over the years, Carl contributed enormously to the manufactured housing industry in Canada. He served tirelessly for over 30 years as a director on various Provincial and National Manufactured Housing Associations. He received numerous awards for industry service, including the 1992 BC Association's Pioneer Award for outstanding contribution and influence over the years.



Customizing your Northland CJS 20' wide home allows you to put the touches into your new home that match your tastes. Starting with the floorplan layout, moving on to cabinets, floor coverings, draperies and more, these personal choices make your home "just right" for you.

SRI - Lethbridge uses only high quality components from established suppliers. Their Intertek certified quality assurance CSA program ensures that each home is inspected at every stage of construction.

While under construction, the building materials and most importantly, the house itself, are protected from the weather.



So, now it is your turn to learn about the Northland CJS 20' wide series of homes. As you turn the pages and review the various floorplans, the standard specifications and then the numerous options available, you can picture yourself in a quality built, yet affordable, SRI Home.





## STANDARDS & SPECIFICATIONS

### EXTERIOR

- ✓ Maintenance Free Vinyl Siding and Corners
- ✓ Painted Wood Fascia
- ✓ 30 year Fibreglass Shingles
- ✓ 4/12 Pitch Roof
- ✓ Insulated 36" Steel Exterior Doors with Peephole and Deadbolt
- ✓ 2x6 Exterior Walls with "Rigid Lam"
- ✓ 12" Engineered "I" Joists at 16" o.c.
- ✓ Engineered Roof Trusses
- ✓ Weatherproof GFI Protected Receptacle
- ✓ Exterior Frost Free Tap with Check Valve
- ✓ Coach Light at All Exterior Doors
- ✓ Lever Handle Doors
- ✓ PVC Windows complete with Screens
- ✓ Separate Receptacle for Heat Tape
- ✓ Residential Eaves (3 Sides)

### INTERIOR

- ✓ Cathedral Ceiling in Living Room, Dining Room and Kitchen
- ✓ Decorative Vinyl Covered Drywall
- ✓ Insulation Values=R-34 in Ceiling, R-20 in Side Walls and R-28 in Floors
- ✓ Satin Platinum Hardware, Lighting and Plumbing Fixtures
- ✓ 2" Venetian Blinds on all Windows
- ✓ 5/8" Subfloor-Glued, Nailed and Screwed
- ✓ Carpet in Living Room, Hall and All Bedrooms
- ✓ No wax Quality Vinyl Floor Covering
- ✓ Solid Shelving in all Closets
- ✓ White Receptacles and light Switches
- ✓ Ceiling Lights in all Bedrooms
- ✓ Crossmore Interior Doors

### KITCHEN

- ✓ 18 cu. ft. Frost Free Refrigerator (Energy Star)
- ✓ 30" Electric Range with Clock and Timer
- ✓ 2-Speed White Rangehood Fan with Light-Vented to Exterior
- ✓ White Kitchen Appliances - Black and Stainless Optional

### KITCHEN (cont'd)

- ✓ Single Lever Kitchen Faucet with Sink Spray
- ✓ Modular Cabinets with Backs
- ✓ Laminated Countertops with 6" Backsplash
- ✓ Microwave Cabinet with Separate Circuit (Most Models)
- ✓ Double Stainless Steel Sink
- ✓ Roller Drawer Hardware

### BATHROOM

- ✓ Tub/Shower Complete with Single Lever Pressure Balanced Faucet
- ✓ Single Lever Faucet at Vanity Sink
- ✓ Shower Rods and Shower Curtain in Main Bathroom and Ensuite
- ✓ Exhaust Fan complete with Humidistat in Main Bathroom
- ✓ Exhaust Fan in Ensuite on Separate Switch
- ✓ Cosmetic box in Main Bath
- ✓ White Bathroom Fixtures
- ✓ GFI Protected Receptacle

### UTILITIES

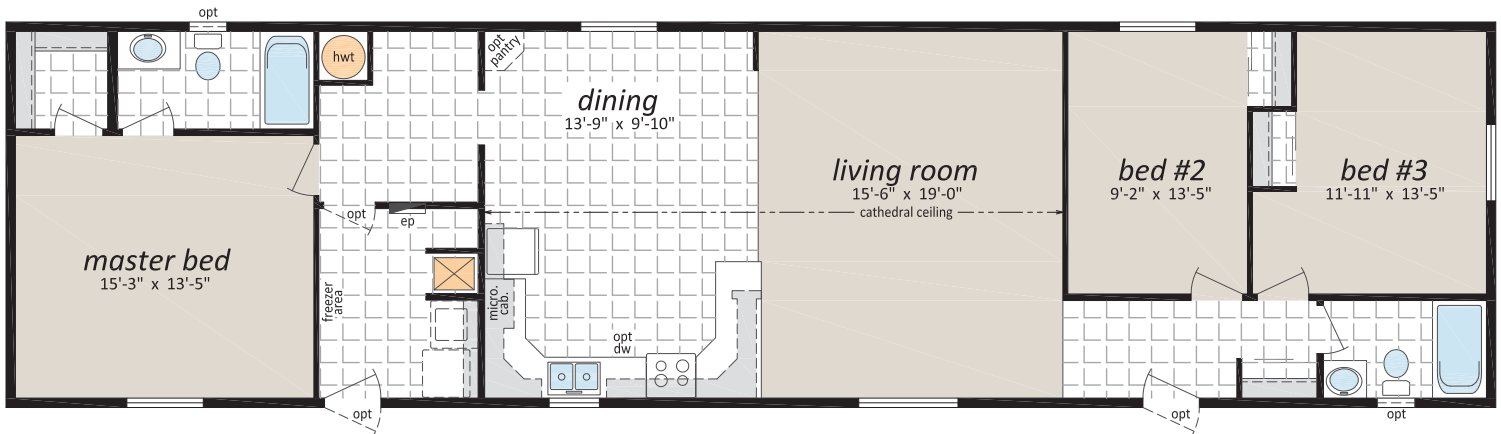
- ✓ 40 U.S. Gallon (33 Imperial Gallon) Electric Water Heater
- ✓ High Efficiency Natural Gas Furnace with Electronic Ignition (Convertible)
- ✓ Life Saving Smoke Detector(s)
- ✓ Dryer Vent Rough In
- ✓ Overhead Solid Shelf at Washer and Dryer Area
- ✓ Electric Conduit through Floor
- ✓ Built to Meet or Exceed Applicable Provincial Codes

This is not a complete specification.  
Please contact your Authorized Retailer  
for more information

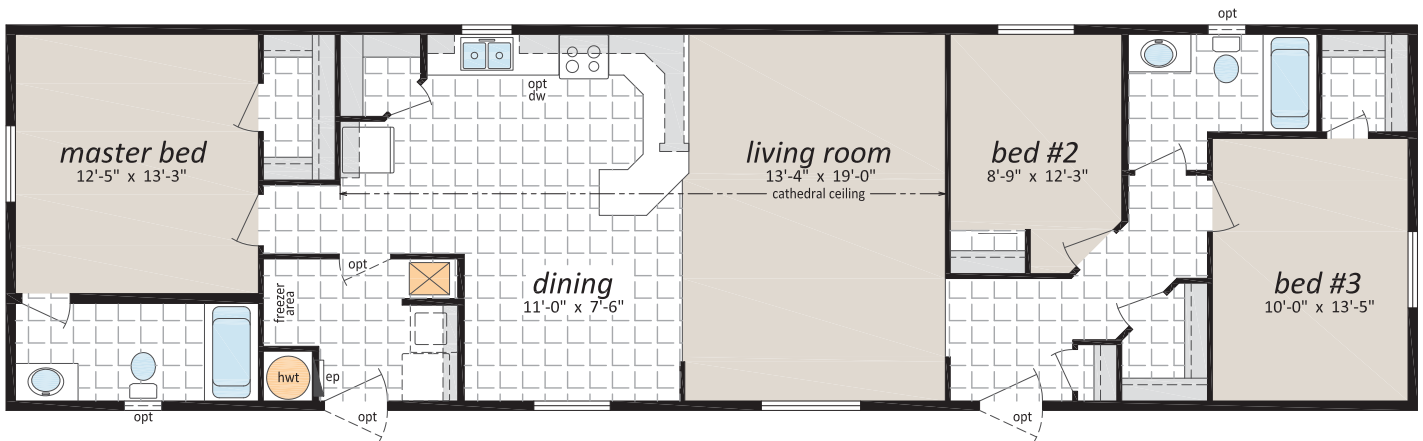


# SAVILLE CJS 20' wide homes

CJS 3000 20' x 76' 1,520 sq. ft.

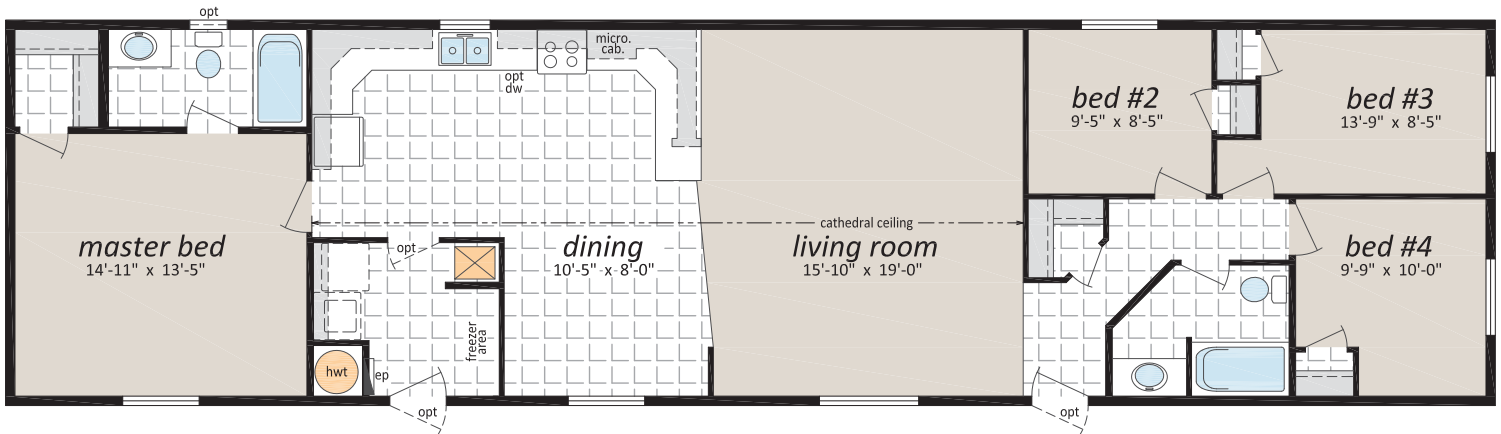


CJS 3004 20' x 72' 1,440 sq. ft.



# SAVILLE CJS 20' wide homes

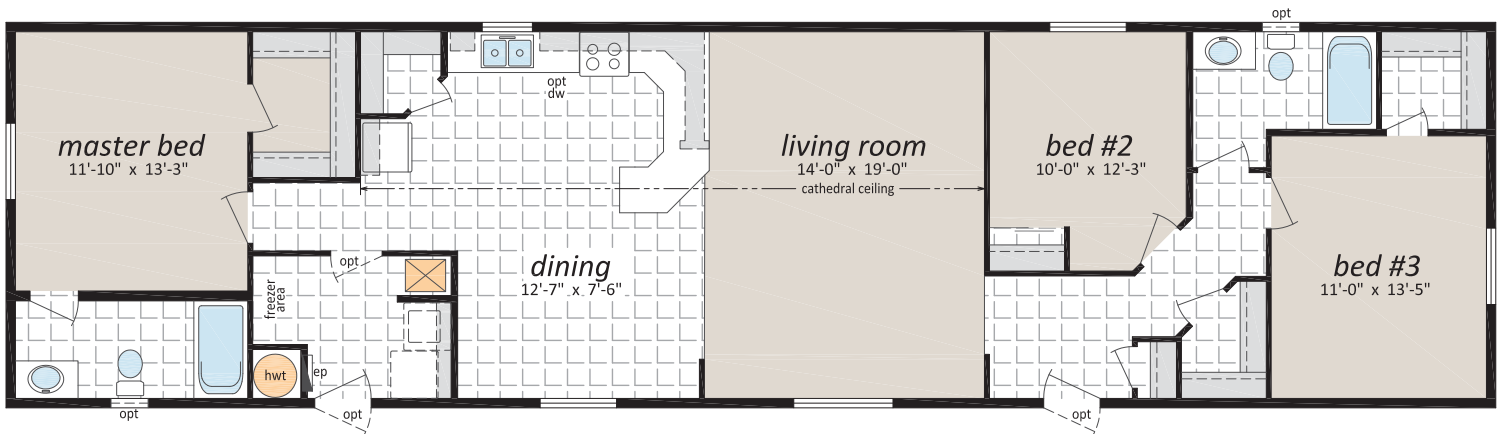
CJS 3005 20' x 76' 1,520 sq. ft.



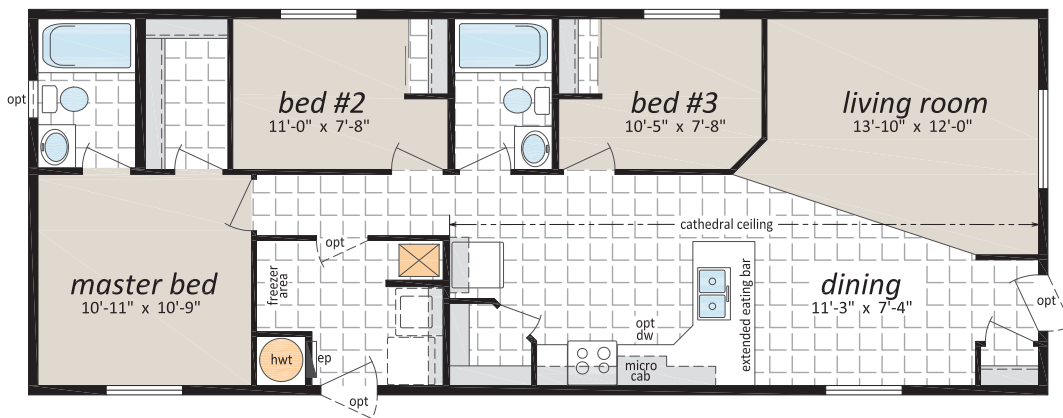


# SAVILLE CJS 20' wide homes

CJS 3006 20' x 76' 1,520 sq. ft.

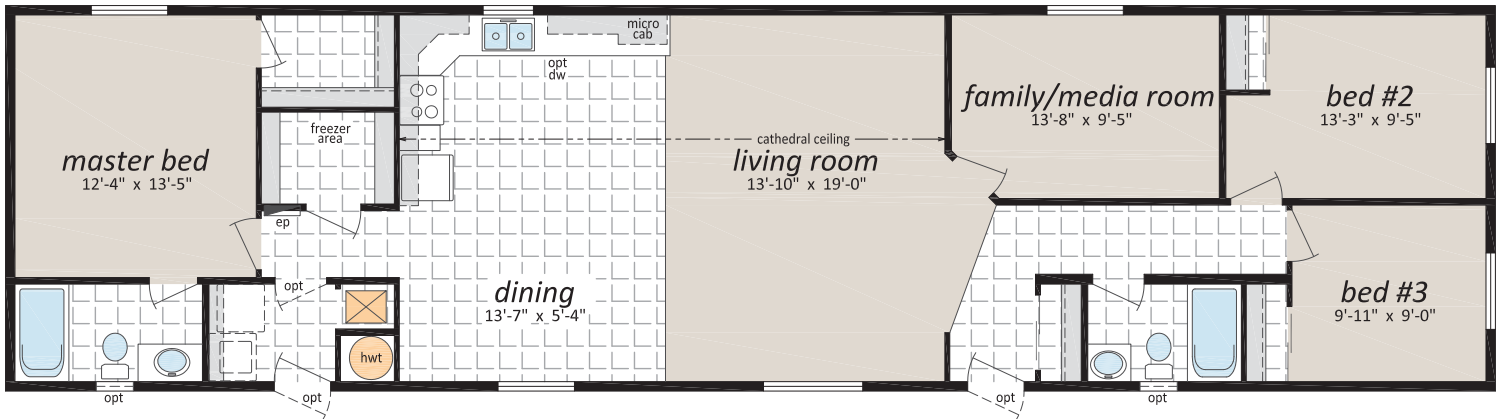


CJS 3009 20' x 52' 1,040 sq. ft.

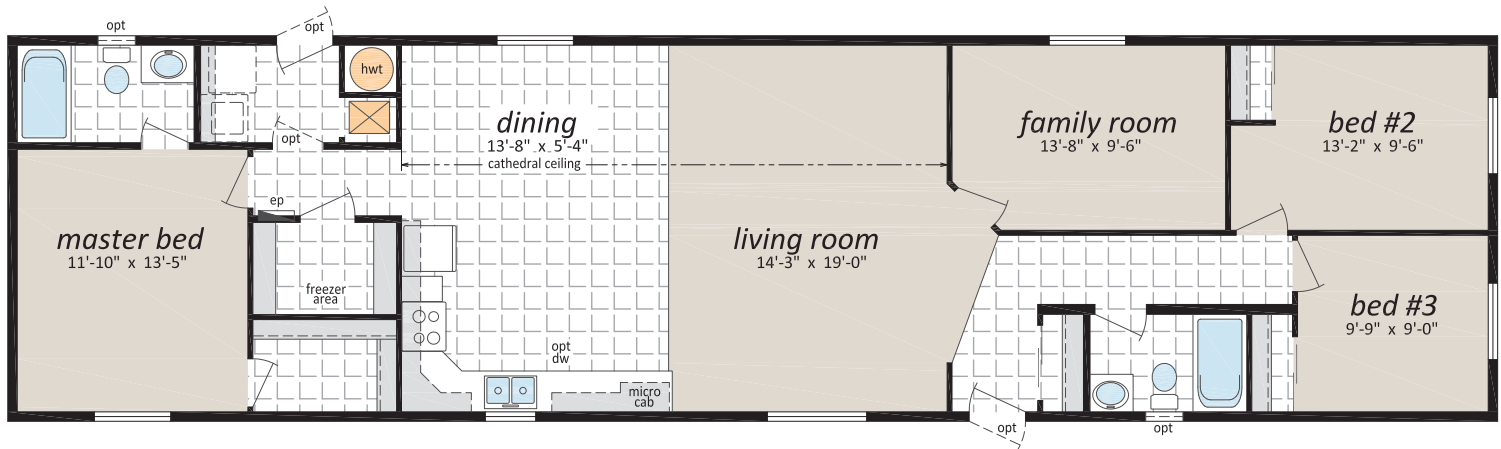


# SAVILLE CJS 20' wide homes

CJS 3011 20' x 76' 1,520 sq. ft.

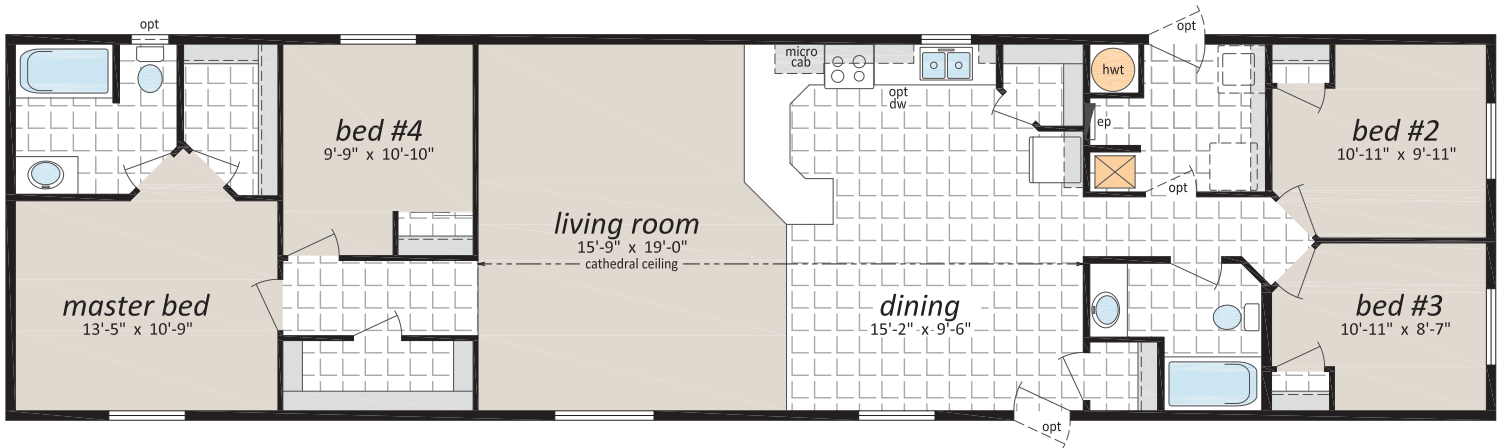


CJS 3013 20' x 76' 1,520 sq. ft.

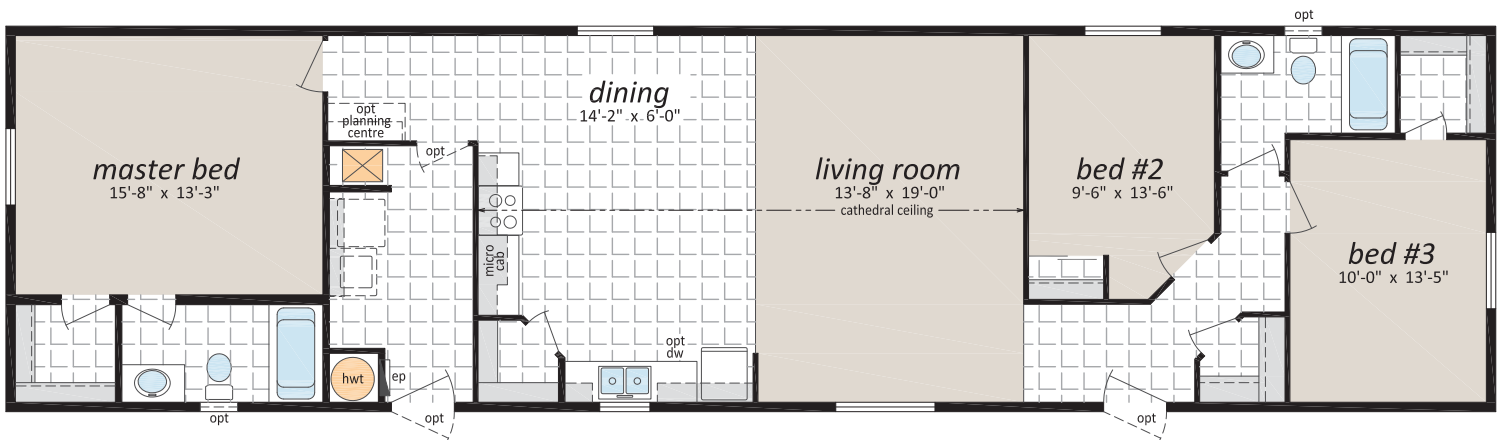


# SAVILLE CJS 20' wide homes

CJS 3014 20' x 76' 1,520 sq. ft.



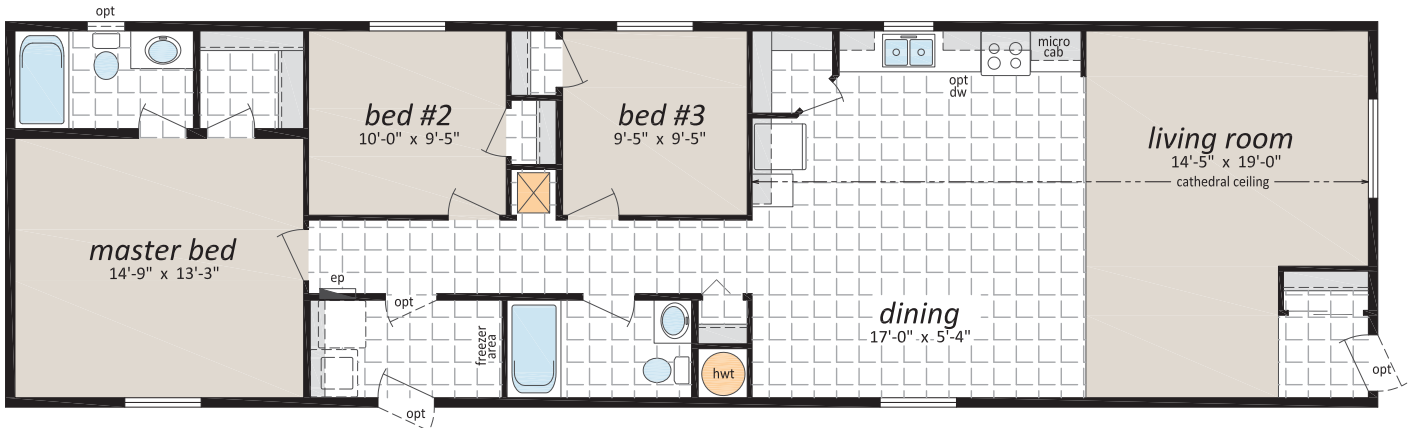
CJS 3015 20' x 76' 1,520 sq. ft.



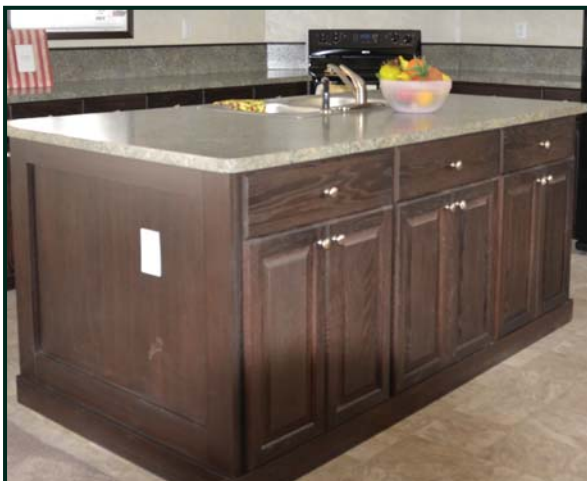
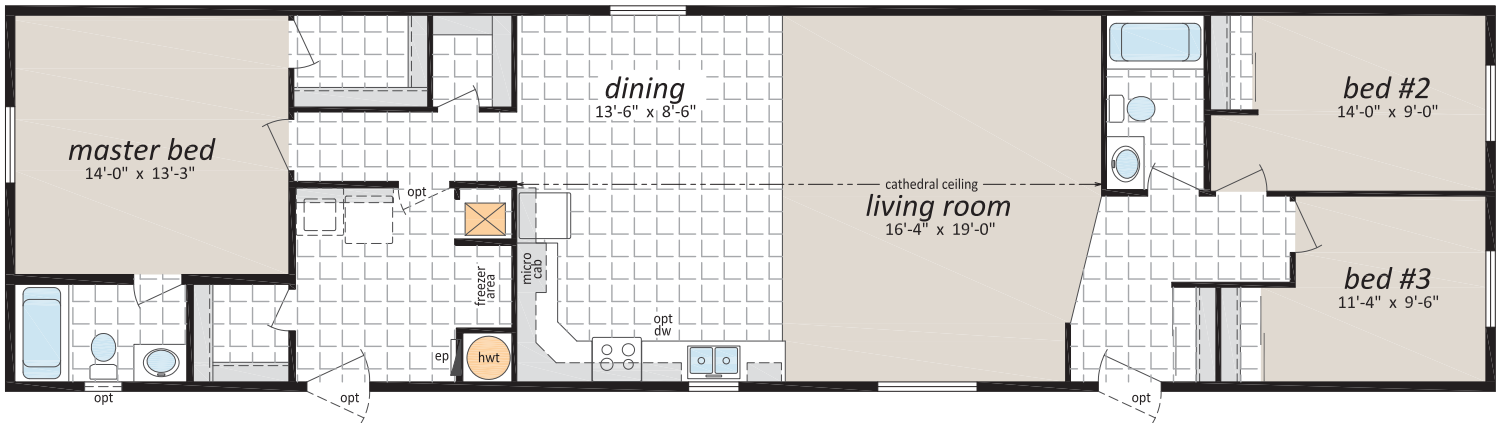


# SAVILLE CJS 20' wide homes

CJS 3017 20' x 70' 1,400 sq. ft.

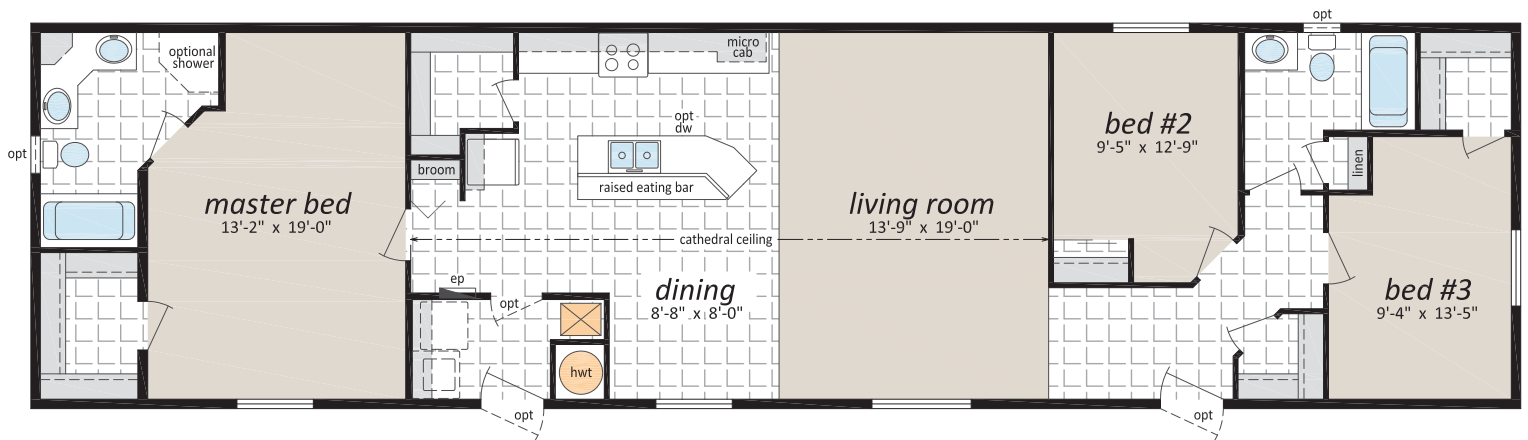


CJS 3018 20' x 76' 1,520 sq. ft.

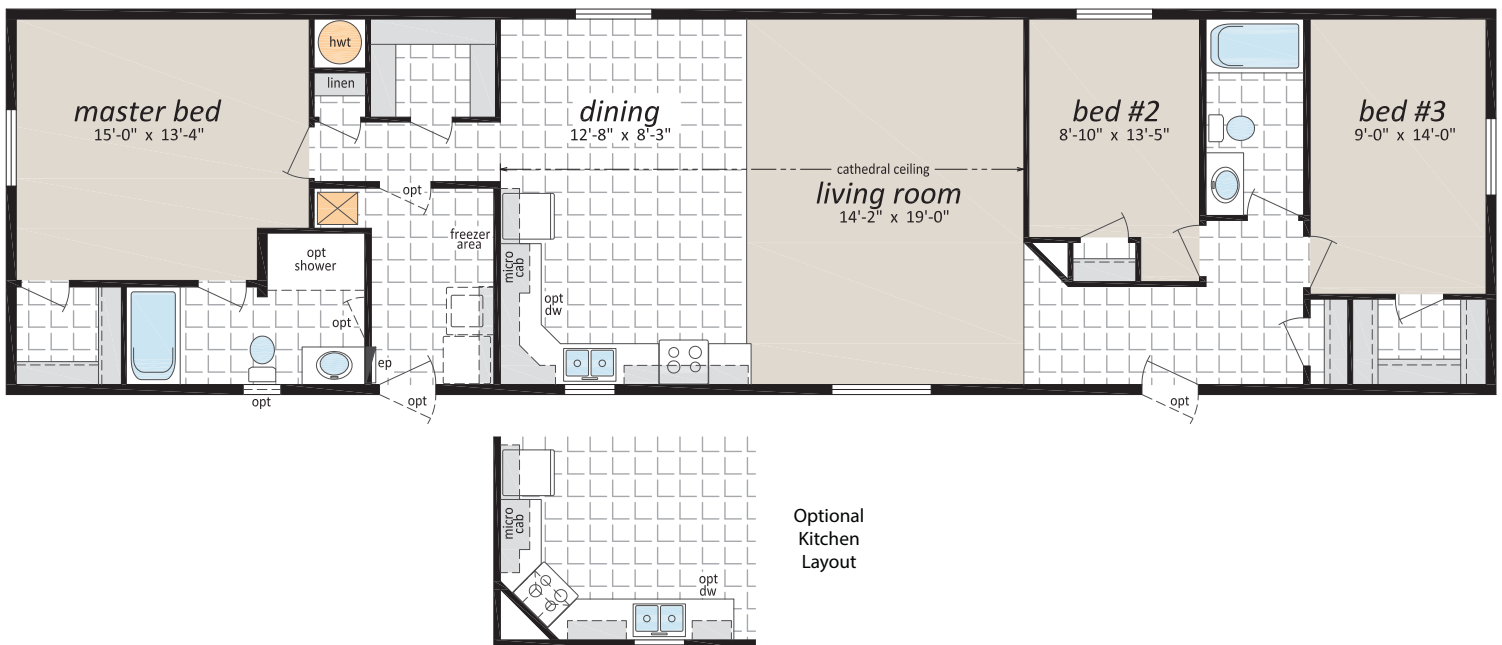


# SAVILLE CJS 20' wide homes

CJS 3019 20' x 76' 1,520 sq. ft.



CJS 3022 20' x 76' 1,520 sq. ft.



Optional  
Kitchen  
Layout

## Optional Features

### EXTERIOR

- ☐ Shutters (Two Styles)
- ☐ Diamond Cut Ceilings
- ☐ Three and Four Light Bay Windows
- ☐ Octagon Windows
- ☐ Segmented Block Windows
- ☐ Lattice in Windows
- ☐ Skylights
- ☐ Patio, Garden and Cottage Doors
- ☐ Storm Doors
- ☐ Exterior Door with Half Round, 9 Lite or Franklin Insert
- ☐ Turbine Vents
- ☐ Door Chimes
- ☐ Exterior Recessed Pot Light(s)
- ☐ Extra Exterior GFI
- ☐ High Snow Load Roof

### INTERIOR

- ☐ Fully Finished Drywall
- ☐ Media Room Package
- ☐ Laminate Flooring
- ☐ Upgrade Vinyl Floor Coverings
- ☐ Storage Bench
- ☐ Freezer Cabinets
- ☐ Soak Sink with Cabinet
- ☐ Utility Room Door
- ☐ Ceiling Fan with Lights
- ☐ Chandeliers
- ☐ Recessed Fluorescent Lights
- ☐ Mini Tube Under Counter Lighting
- ☐ Archways

### KITCHEN

- ☐ Various Cabinet Door Selections
- ☐ Wand Style Deluxe Single Lever Kitchen Faucet
- ☐ Corner Glass Cabinet Doors
- ☐ Island Work Centre
- ☐ Appliance Garage
- ☐ Planning Centre

### KITCHEN (CONT'D)

- ☐ Granite Composite Upgrade Sink
- ☐ Oak Counter Edging
- ☐ Corian Executive Counter Edging
- ☐ Black or Stainless Appliances
- ☐ Built-In Dishwasher
- ☐ Combination Microwave/Range Hood
- ☐ Lazy Susan
- ☐ Eye Level Oven and Cook Top Range
- ☐ Self Cleaning Range
- ☐ Two Door Side by Side Refrigerator



### BATHROOM

- ☐ 72" Tub/Shower
- ☐ Corner Oval Jetted Tub
- ☐ 2 Person Jetted Tub
- ☐ 36", 48" or 60" Shower c/w Glass Doors
- ☐ Handicap Toilet
- ☐ Tri-Mirror Medicine Cabinet
- ☐ Grab Bars
- ☐ Deluxe Shower Curtain
- ☐ Banjo Countertop on Vanity

### UTILITIES

- ☐ Gas Fireplace c/w Air Circulating Fan
- ☐ 40 Gallon U.S. Gas Water Heater
- ☐ Forced Air Electric Furnace
- ☐ Air Conditioner-Ready Furnace
- ☐ Washer and Dryer
- ☐ Stacking Washer and Dryer
- ☐ Central Vacuum System
- ☐ Roughed in for Central Vacuum
- ☐ 200 Amp Service Panel
- ☐ Extra Telephone Jack(s)

### DID YOU KNOW?

All these plans can be widened to 22' wide.



**Plus many more. Please check with your Retailer for details.**







# SAVILLE CJS 20'

## *wide homes*

**Intertek**



**Authorized Retailer:**

**131 Stubb Ross Road . Lethbridge . Alberta T1K 7N3**

**[www.regenthomes.ca](http://www.regenthomes.ca)**



This is not a fully detailed specification. SRI Homes reserves the right to change specifications, designs, materials and suppliers without notice and without incurring obligation. Information contained herein is from data available at the time of printing. Photos and renderings may show optional features. Printed in Canada. 2500/2/2015

