

The Saville CJS SERIES



22' Wide Homes





WHY SRI?

SRI Homes - Lethbridge has been building homes since 1985. During this period, this innovative factory has been expanding the homes that it offers, literally! Yes, now you can receive a home that is 22' wide in a single section. This allows even more options when designing the floorplan that is right for you!



CHOICES

Once you have chosen your floorplan, then the next step is to choose the many interior and exterior decor options; exterior siding and trim, drapery, floor coverings, cabinets and many more. All offered in contemporary colours and designs; just the right choices to make your new home just right for you!



TIMING IS EVERYTHING!

If you are planning a new home but don't want to wait for a site built home, here is some good news. An SRI home can be completed in weeks instead of months! Your new home is completed indoors out of the weather, which protects not only the components, but also the home itself from the elements.



WARRANTY

You and your family can feel confident and secure with the protection you get from SRI and Factory Pro. SRI provides a one year warranty against defects in materials and workmanship. Your FactoryPro Warranty provided by Progressive Home Warranty protects the very heart of your home's structure for 10 full years!



READY, SET ...

See what appeals to you.

The Saville CJS SERIES



Standards and Specifications

Exterior

- ◆ Maintenance Free Vinyl Siding and Corners
- ◆ Coloured Metal Fascia
- ◆ 25 year Fibreglass Shingles
- ◆ 4/12 Pitch Roof
- ◆ Insulated 36" Steel Exterior Doors with Peephole & Deadbolt
- ◆ 2x6 "RIGID-LAM" Exterior Walls with Belt Rails
- ◆ 96" Wall Height
- ◆ 12" Engineered "I" Joists at 16" o.c. Floor System
- ◆ Engineered Roof Trusses
- ◆ Weatherproof GFI Protected Receptacle
- ◆ Exterior Frost Free Tap with Check Valve
- ◆ Coach Light at All Exterior Doors
- ◆ Lever Handle Doors
- ◆ PVC Low E Windows complete with Screens
- ◆ Separate Receptacle for Heat Tape
- ◆ Residential Eaves (3 Sides)

Interior

- ◆ Cathedral Ceiling in Living Room, Dining Room and Kitchen
- ◆ Decorative Vinyl Covered Drywall
- ◆ Insulation Values=R-34 in Ceiling, R-20 in Side Walls and R-28 in Floors
- ◆ Satin Platinum Hardware, Lighting and Plumbing Fixtures
- ◆ 1" Venetian Blinds on all Windows
- ◆ 5/8" Subfloor-Glued, Nailed and Screwed
- ◆ Carpet in Living Room, Hall and All Bedrooms
- ◆ No wax Quality Vinyl Floor Covering
- ◆ Solid Shelving in all Closets
- ◆ White Receptacles and light Switches
- ◆ Ceiling Lights in all Bedrooms

Kitchen

- ◆ 18 cu. ft. Frost Free Refrigerator
- ◆ 30" Electric Range with Clock and Timer
- ◆ 2-Speed White Rangehood Fan with Light-Vented to Exterior
- ◆ White Kitchen Appliances - Black and Stainless Steel Optional
- ◆ Single Lever Kitchen Faucet with Sink Spray
- ◆ Monterey Modular Cabinets with Backs
- ◆ Laminated Countertops with 6" Backsplash
- ◆ Microwave Cabinet with Separate Circuit (Most Models)
- ◆ Double Stainless Steel Sink
- ◆ Roller Drawer Hardware

Bathroom

- ◆ Tub/Shower Complete with Single Lever Pressure Balanced Faucet
- ◆ Single Lever Faucet at Vanity Sink
- ◆ Shower Head in Main Bathroom
- ◆ Shower Rods and Shower Curtain in Main Bathroom
- ◆ Exhaust Fan complete with Humidistat in Main Bath
- ◆ Exhaust Fan in Ensuite on Separate Switch
- ◆ Cosmetic box in Main Bath
- ◆ White Bathroom Fixtures
- ◆ GFI Protected Receptacle

Utilities

- ◆ 33 Imperial Gallon (40 U.S. Gallon) Electric Water Heater
- ◆ High Efficiency Gas Furnace with Electronic Ignition Life Saving Smoke Detector(s)
- ◆ Dryer Vent Rough In
- ◆ Overhead Solid Shelf at Washer and Dryer Area
- ◆ 100 amp. Service Panel
- ◆ Electric Conduit through Floor
- ◆ Built to Meet or Exceed Applicable Provincial Codes



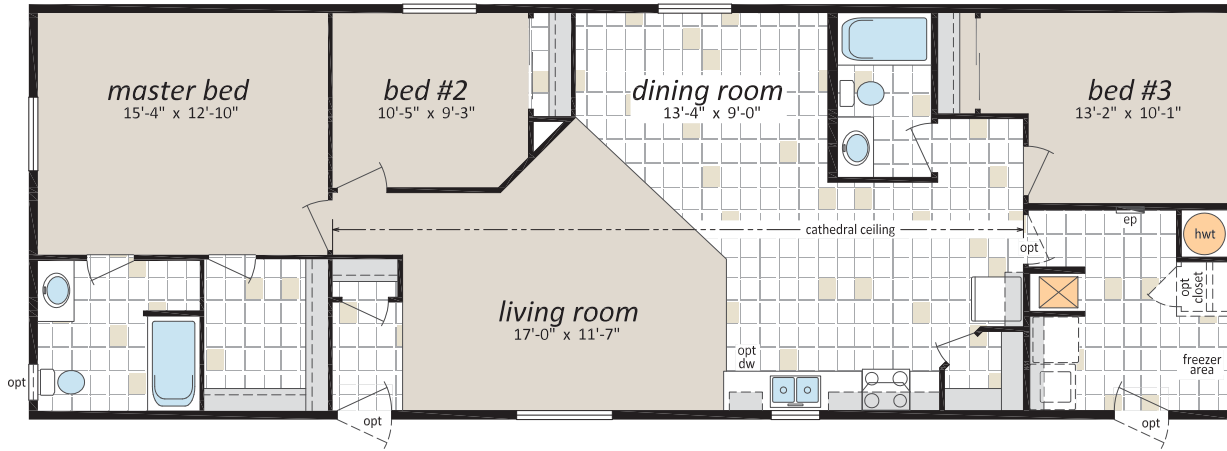
22'Wide Homes



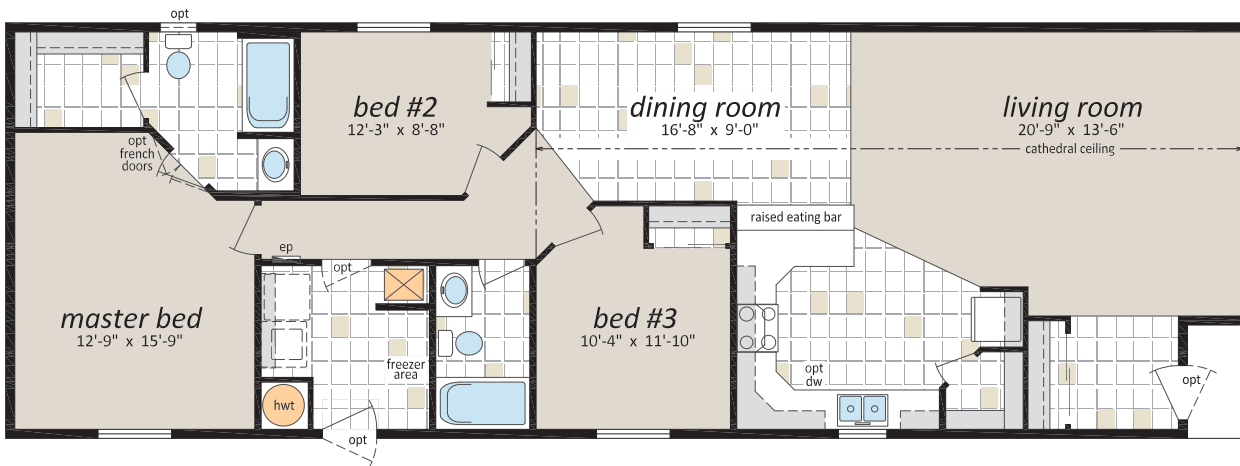


The Saville CJS SERIES

CJS-2206, 22' x 64', 1,408 sq. ft.



CJS-2208, 22' x 66', 1,452 sq. ft.

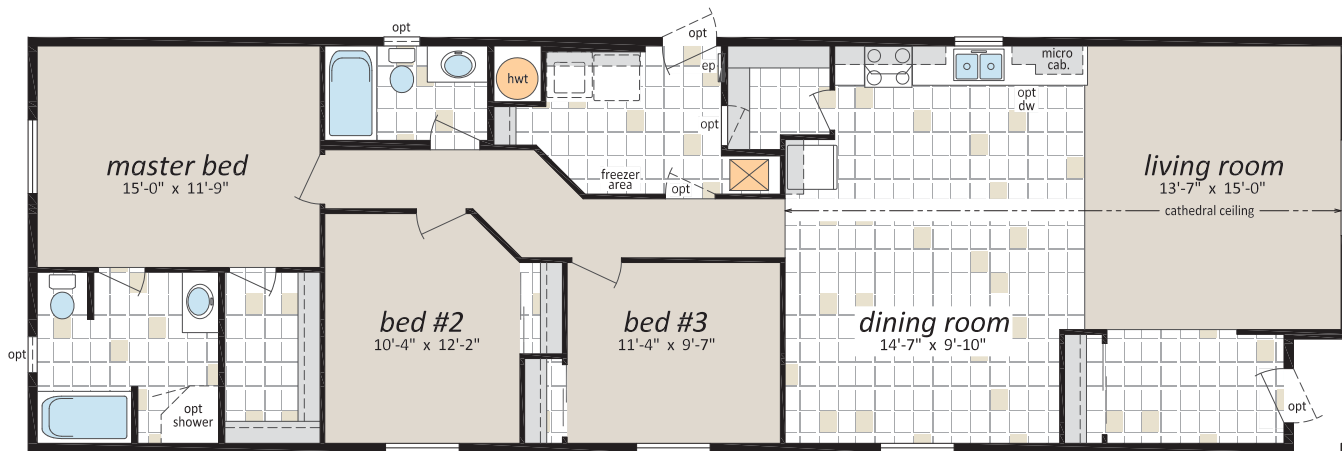


22' Wide Homes

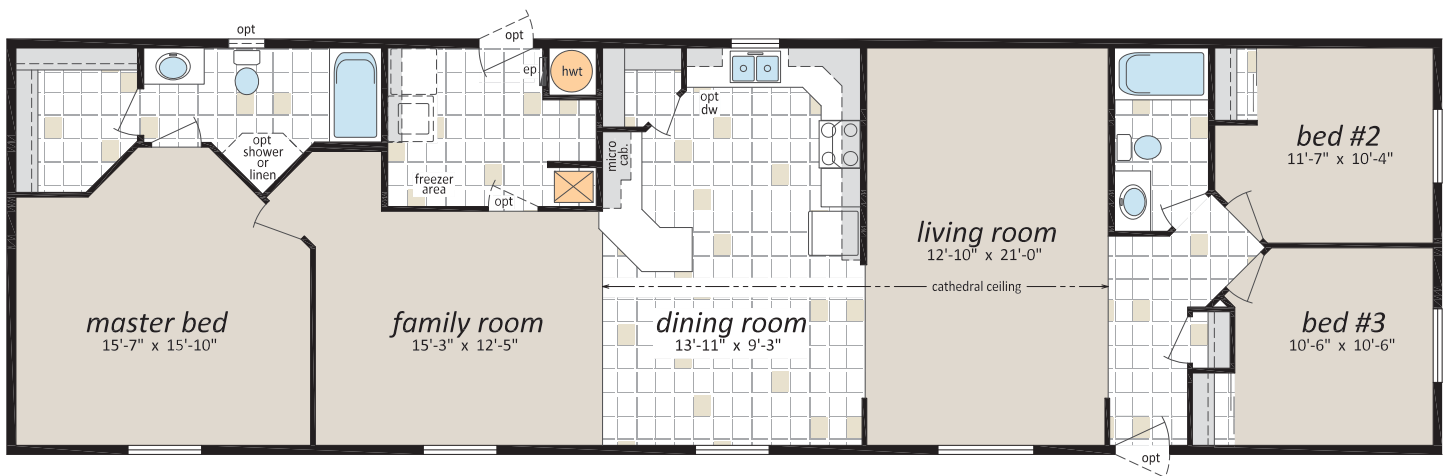
The Saville CJS SERIES



CJS-2210, 22' x 70', 1,540 sq. ft.



CJS-2212, 22' x 76', 1,672 sq. ft.

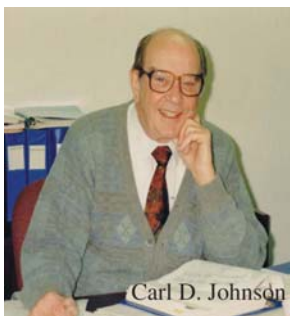
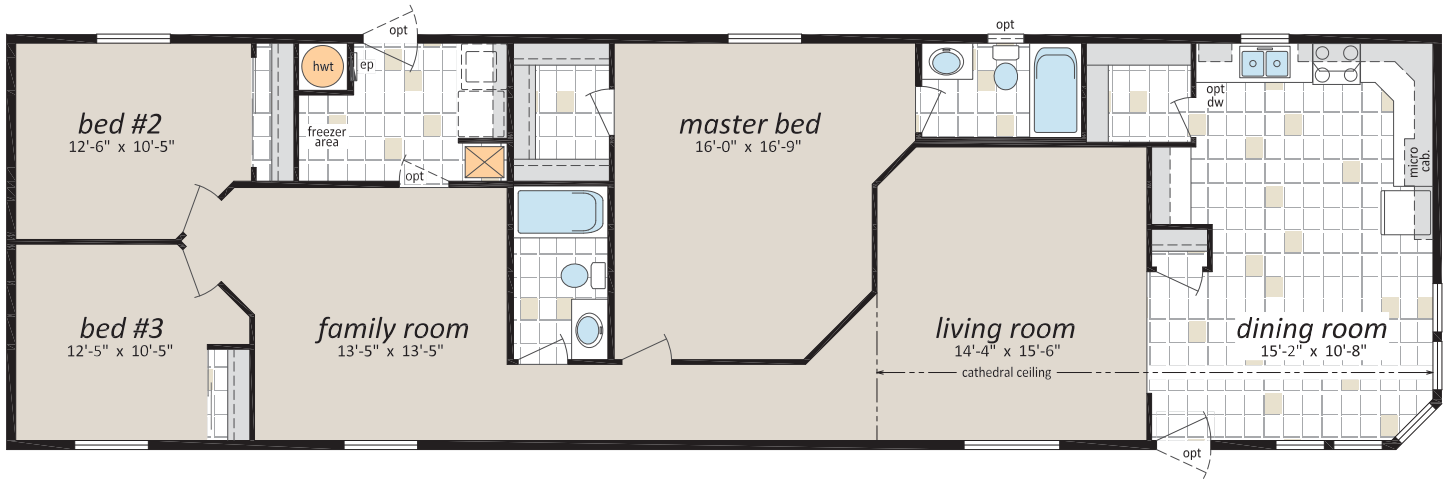


22' Wide Homes



The Saville CJS SERIES

CJS-2214, 22' x 76', 1,672 sq. ft.



Carl D. Johnson

The CJ Series was created as a tribute to Carl Johnson, the founder of SRI Homes. Over the years, Carl contributed enormously to the manufactured housing industry in Canada. He served tirelessly for over 30 years as a director on various Provincial and National Manufactured Housing Associations. He received numerous awards for industry service, including the 1992 BC Association's Pioneer Award for outstanding contribution and influence over the years.

22' Wide Homes

The Saville CJS SERIES



Optional Features

Exterior

- ☐ Shutters
- ☐ Diamond Cut Ceilings
- ☐ Three and Four Light Bay Windows
- ☐ Palladian Windows
- ☐ Octagon Windows
- ☐ Acrylic Block Windows
- ☐ White or Pewter Lattice in Windows
- ☐ Skylights
- ☐ Patio, Garden Doors and Cottage Doors
- ☐ Storm Doors
- ☐ Exterior Door with Half Round, 9 Lite or Franklin Insert
- ☐ Turbine Vents
- ☐ Electric Door Chimes
- ☐ Exterior Recessed Pot Light(s)
- ☐ Extra Exterior GFI
- ☐ High Snow Load Roof

Interior

- ☐ Fully Finished Drywall
- ☐ Media Room Package
- ☐ Laminate Flooring
- ☐ Upgrade Vinyl Floor Coverings
- ☐ French Doors
- ☐ Mirrored Closet Doors
- ☐ Freezer Cabinets
- ☐ Soak Sink with Cabinet
- ☐ Utility Room Door
- ☐ Ceiling Fan with Lights
- ☐ Chandeliers
- ☐ Recessed Fluorescent Lights
- ☐ Mini Tube Under Counter Lighting
- ☐ Archways

Kitchen

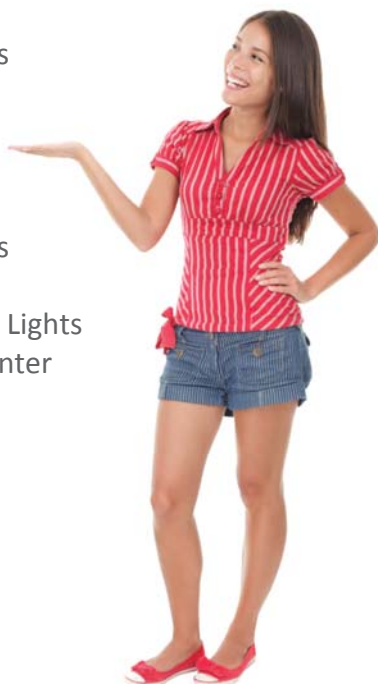
- ☐ 5 Cabinet Door Colours to Choose From
- ☐ Corner Glass Cabinet Doors
- ☐ Wand Style Deluxe Single Lever Kitchen Faucet
- ☐ Island Work Centre
- ☐ Planning Centre
- ☐ Lazy Susan
- ☐ Granite Composite Upgrade Sink
- ☐ Oak or Maple Counter Edging
- ☐ Corian Executive Counter Edging
- ☐ Built-In Dishwasher
- ☐ Combination Microwave/Range Hood
- ☐ Eye Level Oven and Cook Top Range
- ☐ Self Cleaning Range
- ☐ Two Door Side by Side Refrigerator
- ☐ Free Standing Bottom Mount Refrigerator

Bathroom

- ☐ 72" Tub/Shower
- ☐ Corner Oval Jetted Tub
- ☐ 2 Person Jetted Tub
- ☐ 36", 48" or 60" Shower c/w Glass Doors
- ☐ Handicap Toilet
- ☐ Tri-Mirror Medicine Cabinet
- ☐ Grab Bars
- ☐ Deluxe Shower Curtain
- ☐ Banjo Countertop on Vanity

Utilities

- ☐ Gas Fireplace c/w Air Circulating Fan
- ☐ 40 Gallon U.S. Gas Water Heater
- ☐ Forced Air Electric Furnace
- ☐ Air Conditioner-Ready Furnace
- ☐ Washer and Dryer
- ☐ Stacking Washer and Dryer
- ☐ Central Vacuum System
- ☐ Roughed in for Central Vacuum
- ☐ 200 Amp Service Panel
- ☐ Extra Telephone Jack(s)



Plus many more. Please check with your Retailer for Details

22'Wide Homes



The Saville CJS SERIES



22' Wide Homes



Authorized Retailer:



131 Stubb Ross Road • Lethbridge • Alberta T1K 7N3

www.regenthomes.ca

This is not a fully detailed specification. SRI Homes ULC reserves the right to change specifications, designs, materials and suppliers without notice and without incurring obligation. Information contained herein is from data available at the time of printing. Photos and renderings may show optional features. Printed in Canada, March 2012.