



ACCENT HOME SERIES

RTM (Ready to Move) 1 Piece

Moved directly to your site



www.regenthomes.ca



ACCENT HOME SERIES

SRI HOMES REGENT is offering another way to bring your home to you.

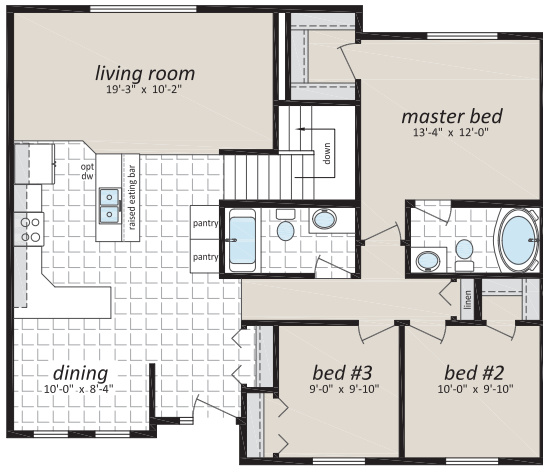


Here are some features that a RTM home offers:

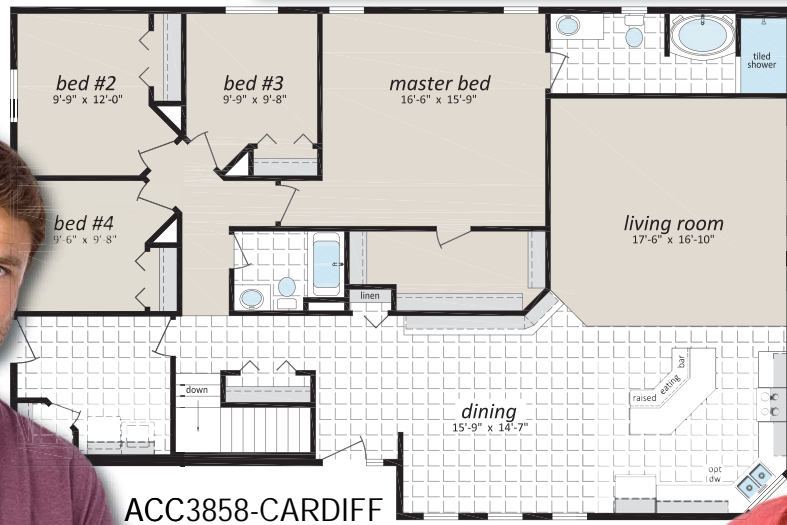
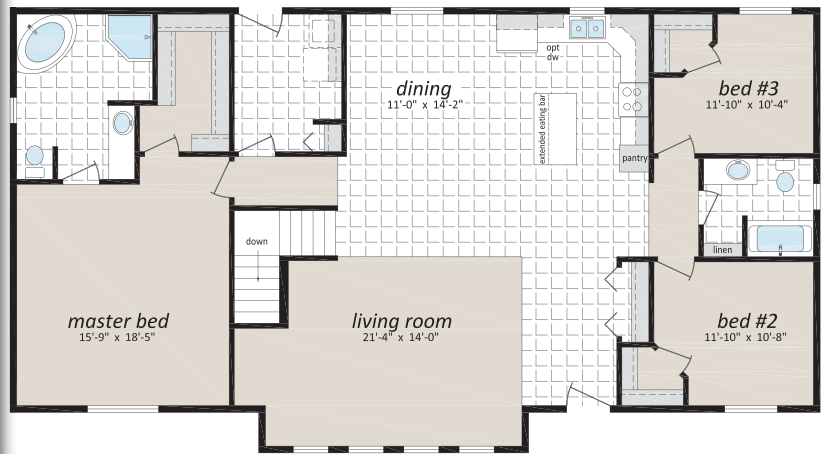
- a ONE PIECE home up to 40' WIDE and just about any length
- reduced on-site assembly; It is simply PLACED on your FOUNDATION
- 9' WALL HEIGHT and 24" residential eaves
- once a floor plan layout has been created, your home can be DELEVERED to site 3 to 4 months later.
- Our building site and systems are all CSA APPROVED and are monitored by Intertek inspectors to Provincial Building Code Standards.
- Being the LARGEST BUILDER of off-site built housing in CANADA, our buying power means SAVINGS for you.
- We have standard plans to choose from, but we can work with you to CUSTOMIZE your home to look just about any way you want.



ACC3400-MANCHESTER



ACC3260-WINCHESTER



ACC3858-CARDIFF

ACC3254-CAMBRIDGE





REGENT HOMES has been constructing quality off-site built homes since the mid 80's. Their experience and expertise has made them a leader in housing and this latest expansion into RTM homes is simply a further step in this journey. All of our construction meets or exceeds the provincial building codes and this is ensured through the CSA A277 certification process.

An internal quality control program and continuous monitoring is used throughout the building process. All trades are

highly skilled and trained, thus allowing for superior building consistency. All materials and tools are available and ready for workers at each stage, allowing for minimized loss of time, set-up and down-time of equipment.

Homes arrive at destination in one or more large modules that are 85% or greater complete. On site construction activity and time frame thereof is reduced by 80% or more, as is pollutants contained in heating fuels, toxic adhesives, other waste materials, and general impact on the surface environment and neighbouring properties.

The consolidation of labour and most building materials, usually within 150 KM of the building site, results in reduced car/truck traffic and the time frame thereof, noise, pollution, and quality of life impacts in areas where construction of new homes and other buildings occurs.

Our factories buy large quantities of lumber and other building materials, much of which is ordered to exact fitment requirements, thereby reducing waste and cost. Waste that does occur, is 50-70% less than when a building is constructed on site and can readily be recycled or disposed of properly.

Regent Homes believes that off-site construction is a better way to build homes. We look forward to delivering one to your site soon.



Authorized Retailer:



131 Stubb Ross Road . Lethbridge . Alberta T1K 7N3
www.regenthomes.ca

This is not a fully detailed specification. SRI Homes reserves the right to change specifications, designs, materials and suppliers without notice and without incurring obligation. Information contained herein is from data available at the time of printing. Photos, floor plans and renderings may show optional features.

Printed in Canada. 3000/03/2017

