

# AFFINITY 2 Show Home



## THE AFFINITY 2 18X68 1224 sqft

### Features Include:

- ♦ Pewter Pine Cabinets
- ♦ Pearl Soapstone Countertops
- ♦ Stainless Steel Appliances
- ♦ Full Tile Backsplash
- ♦ Extended Eating Bar on Island
- ♦ Garden Doors in Dining Room
- ♦ A/C Ready



*The photos displayed of this home may be different from the actual home.*



### **Jim Fradette**

403.396.5047

[jim@dynamicmodular.ca](mailto:jim@dynamicmodular.ca)

8260 Chiles Industrial Avenue

Red Deer, Alberta

403.341.4422

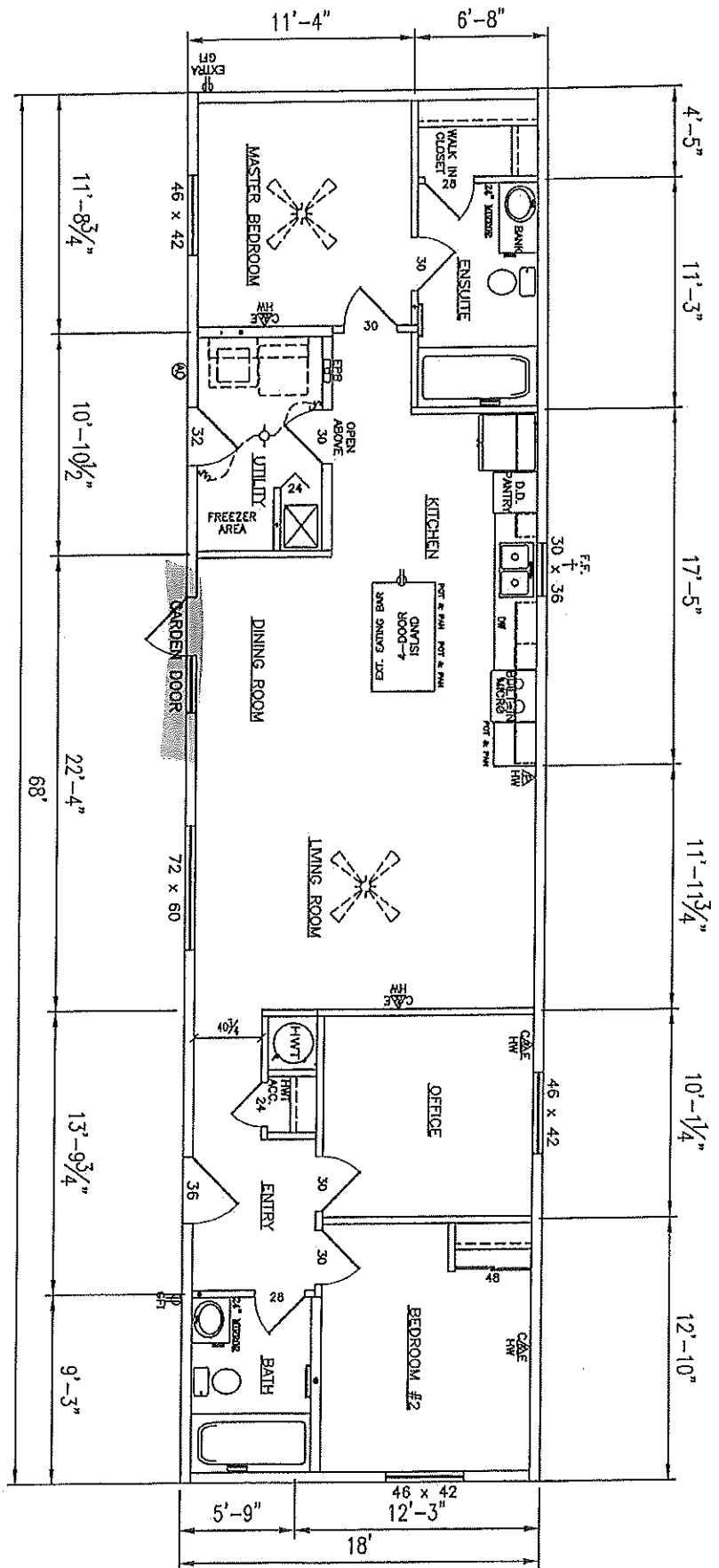
Toll Free: 1.877.341.4422

[www.dynamicmodular.ca](http://www.dynamicmodular.ca)

*We Put Your Family First!*



# FLAT CEILING THROUGHOUT





## STANDARD FEATURES AND SPECIFICATIONS

### Affinity Series



#### **EXTERIOR**

Colour coordinated metal fascia  
Vinyl siding and corners  
4/12 pitch roof  
16" HE eave, no side or rear eaves  
30-year architectural fiberglass shingles  
7/16" roof sheathing  
Separate receptacle for heat tape (HWT and furnace)  
Engineered roof trusses  
2" x 10" floor joists @ 16" o.c. (16' wide), 12" deep  
Engineered I-Joists @ 19.2" o.c. (18' & 20' wide)  
3/8" wall sheathing on inside & outside of exterior walls  
Insulation: R22 walls; R40 ceiling; R48 floor  
2x6 side walls @ 24" o.c. - 8' walls  
19/32" T&G subfloor  
Frost-free tap

#### **DOORS**

Insulated steel exterior doors, 36" front and 32" rear  
with peepholes and deadbolts  
Coach lights at all exterior doors

#### **WINDOWS**

LowE PVC windows and sills with screens  
60x60 picture window in LR

#### **KITCHEN**

Adjustable shelf in all cabinets – (1)  
Double stainless-steel sink  
Contemporary style cabinet doors (with one drawer)  
with Contemporary crown moulding and upgrade pulls  
2-speed range hood with light and fan  
18 cu. ft. refrigerator  
30" electric range  
Shelf over sink  
Shelf over fridge  
2 handle faucets

#### **UTILITY ROOM**

Plumbed and wired for washer/dryer  
High efficiency gas furnace  
100-amp electrical panel  
Electric hot water tank  
Shelf over washer and dryer

#### **BATHROOMS**

Exhaust fan with humidistat in main bath  
Exhaust fan in ensuite on separate switch  
Towel bar in each bath  
Showerhead in all baths  
GFI receptacle in all baths  
Walled tub/shower with single lever pressure balanced  
faucet in all baths  
2 handle faucets in all baths  
Shower rod and liner

#### **INTERIOR**

6 mil. vapour barrier includes switches and receptacles  
Quality vinyl floor covering throughout on 16 wides;  
18 and 20 wides include carpet in living room  
Flat ceilings throughout  
Ceiling clip lights throughout  
Solid shelving in all closets  
Knob handles on all interior doors  
Prefinished moulding; battens at the ceiling  
White hardboard passage doors 24" - 30" (no profile)  
4" ceramic tile backsplash at kitchen and vanities (no edging)  
2x3 interior walls

#### **MISCELLANEOUS**

Electric smoke/CO detector(s)  
Wire only ceiling light in living room  
Main electrical conduit through floor  
Programmable thermostat  
Airtight Protocol

#### **LIMITED OPTIONS AVAILABLE**

**CUSTOM CHANGES ARE NOT PERMITTED**

**ALL HOMES ARE BUILT TO MEET OR EXCEED**

**CSA A-277 SPECIFICATIONS**

**ENERGY ZONE UPGRADES MAY BE REQUIRED**

**HOME IS BUILT TO MEET ENERGY ZONE 7A**

**ALL PRICES ARE F.O.B. LETHBRIDGE, AB**

**ALL PRICES DO NOT INCLUDE GST**

**ALL PRICES DO NOT INCLUDE ASSOCIATION FEES**

**STANDARDS IN EFFECT AS OF JANUARY 19, 2021**

This is not a fully detailed specification. SRI Homes - Regent reserves the right to change specifications, designs, materials and suppliers without notice and without incurring obligation. Information contained herein is from data available at the time of printing.